

MAGAIN



11 Emelia Jane Close Woodcroft SA

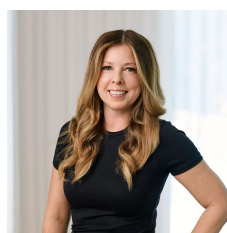
4  2  4 

Please contact Mike Dobbin and Zoe Ball from Magain Real Estate for all your property advice.

Located in the prestigious Woodleigh Estate, this impressive Bluestone-fronted family home is designed to captivate the most discerning buyers. Set on a spacious 842 sqm corner block, this 212 sqm residence includes a stunning, all-weather entertaining area, perfect for year-round comfort.

The functional layout offers four generous bedrooms, with built-in robes and a custom built desk in bedroom four that can double as a home office. The master suite features a bay window, ceiling fan, and an updated ensuite with a semi-frameless shower and stylish tiling. At the front of the

Type : House
Building Size : 212 sqm
Land Size : 842 sqm
View : <https://www.magain.com.au/property/11-emelia-jane-close-woodcroft-sa/8438139>

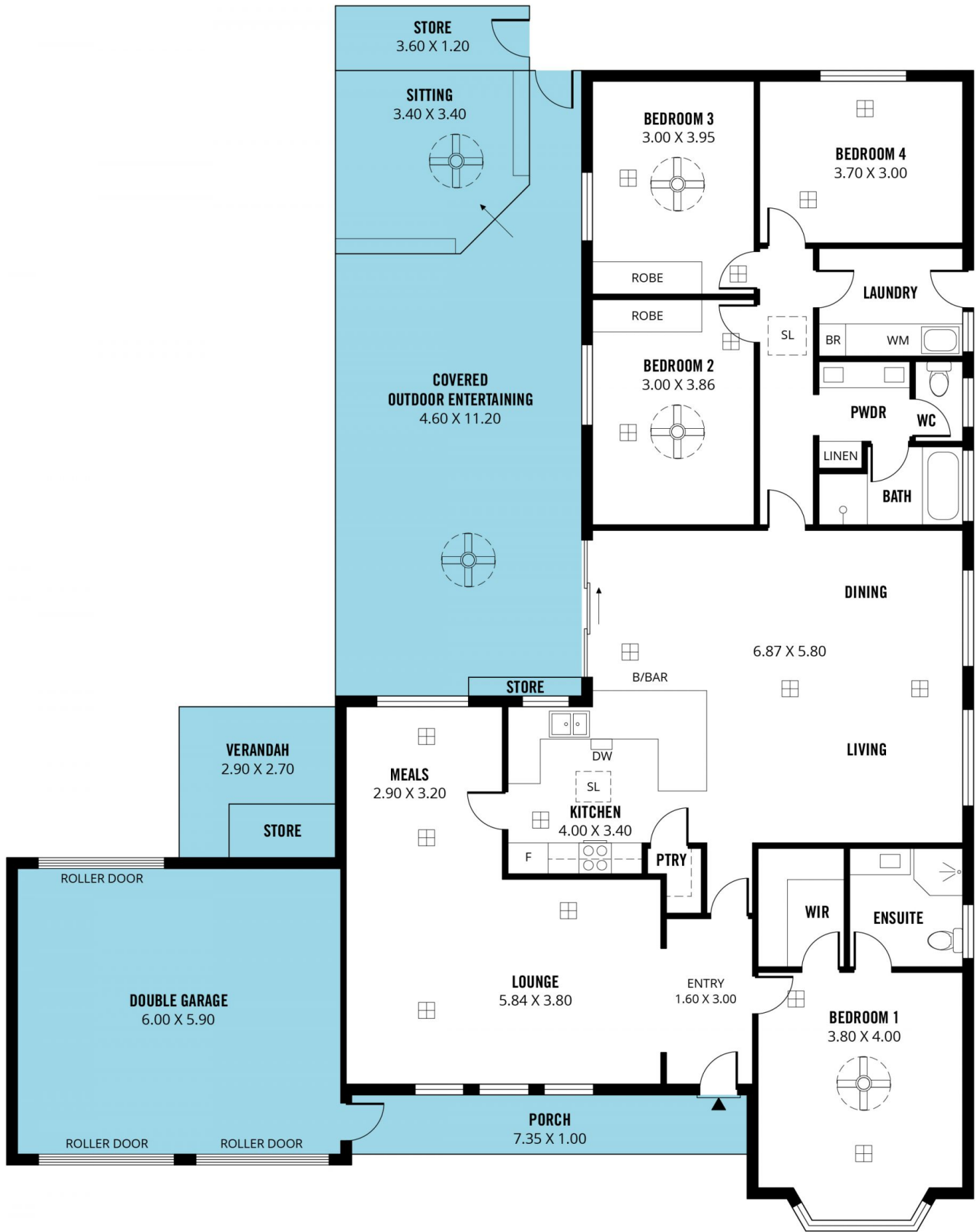


Zoe Ball
08 8381 6000

[For full version visit the website](https://www.magain.com.au)

<https://www.magain.com.au>
Magain Real Estate

Shop 15, Woodcroft Market Plaza, 217 Pimpala Road W
08 8381 6000



Scale in metres. This drawing is for illustration purposes only. All measurements are approximate and details intended to be relied upon should be independently verified.

Produced by **The Fotobase Group**