

MAGAIN



105/26D Gorman Street Modbury SA

3 2 1

Please contact Baz Rampal from Magain Real Estate for all your property advice.

Located in the established and thriving community of Modbury in Adelaide's northeast, this exquisite house offers everything you need for a comfortable and convenient lifestyle. Just a short 25-minute drive to Adelaide's city center, commuting is a breeze, with the Tea Tree Plaza Interchange only a 5-minute walk away, providing easy access to the city via the O-Bahn public transport in just 15 minutes.

This standalone property boasts a wealth of amenities, making it perfect for families and investors alike. With well-maintained public facilities, excellent transport links, a

[For full version visit the website](#)

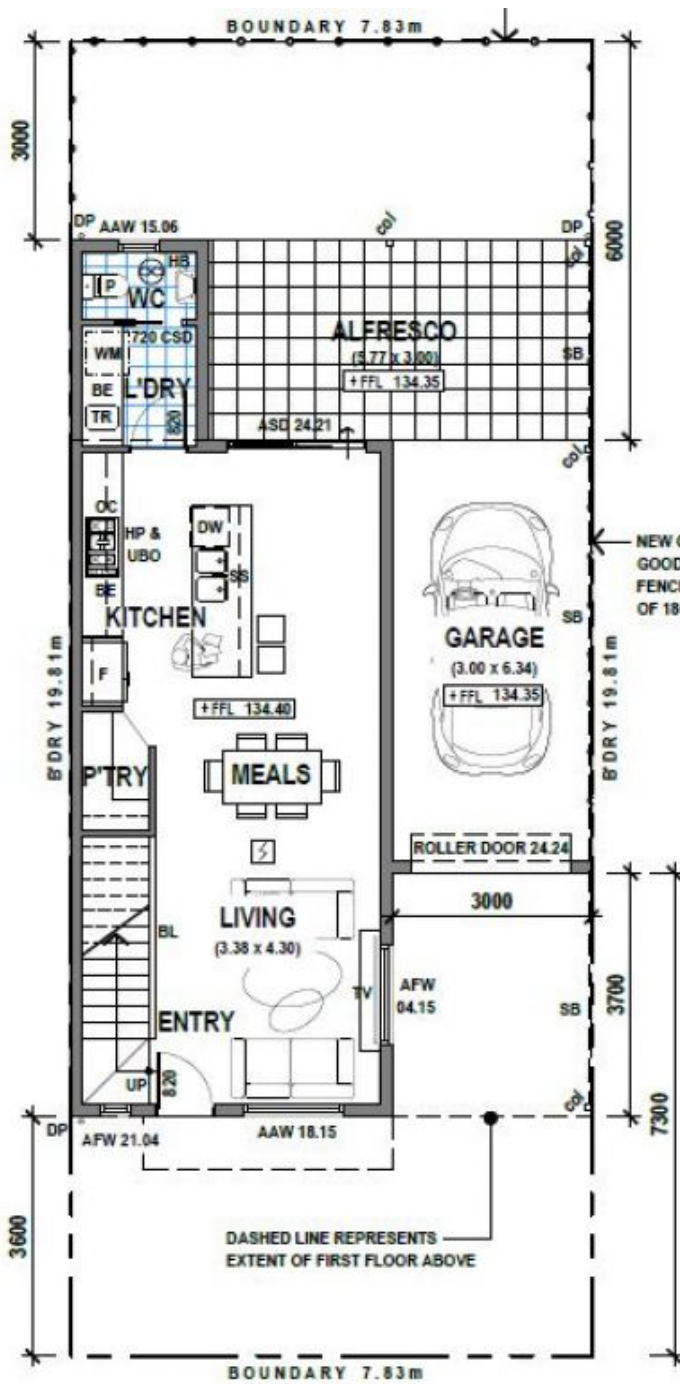
Type : Land
Price : \$ 317,000
Building Size : 174.6 sqm
Land Size : 155 sqm
View : <https://www.magain.com.au/property/10526d-gorman-street-modbury-sa/843814>
4



Bharat Rampal
08 8381 6000

<https://www.magain.com.au>
Magain Real Estate

Shop 15, Woodcroft Market Plaza, 217 Pimpala Road W
08 8381 6000

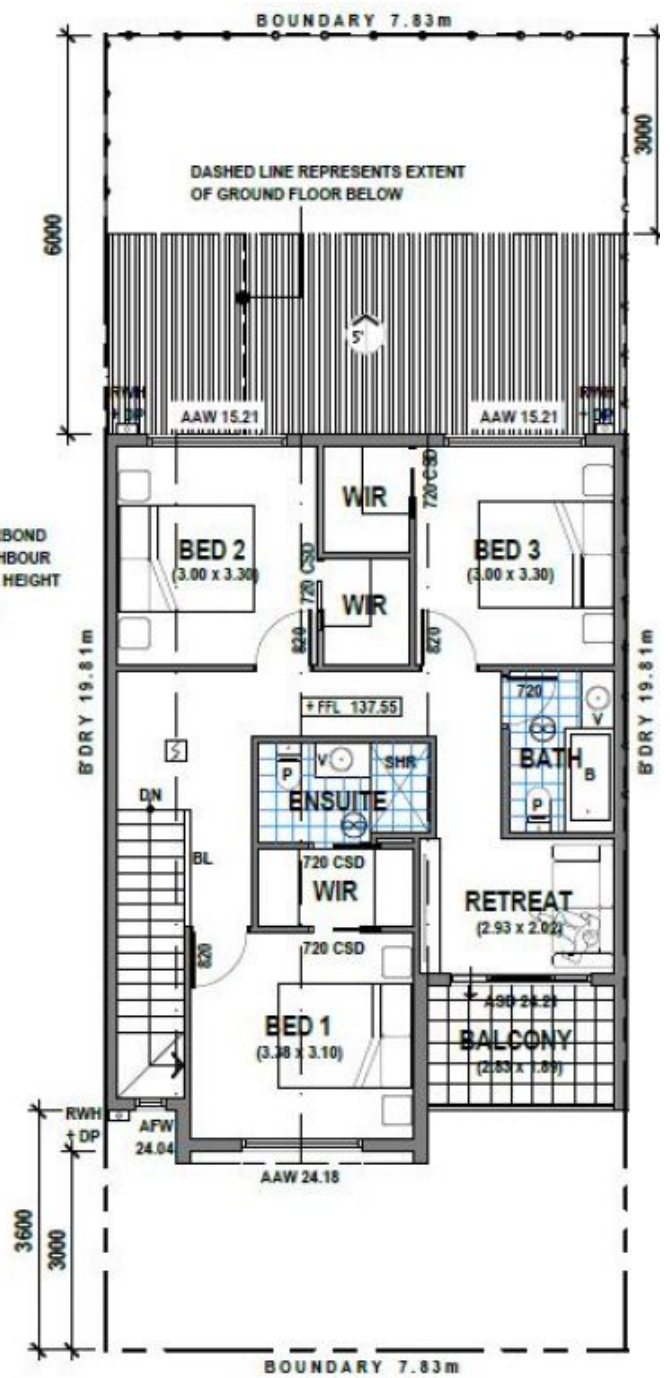


GROUND FLOOR PLAN

SCALE 1:100



SCALE BAR



FIRST FLOOR PLAN

SCALE 1:100



SCALE BAR

