

MAGAIN



1/2a Moy Avenue Warradale SA

2 1 1

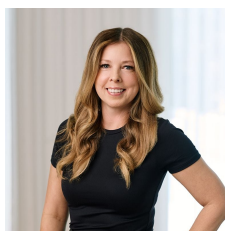
Please contact Mike Dobbin and Zoe Ball from Magain Real Estate for all your property advice.

This beautifully presented two bedroom unit is sure to be a hit for first home buyers, downsizers & investors alike. Located in the popular Warradale, it is close by to Marion Shopping Centre, less than a minute walk to the train station and not far from Brighton Beach & Jetty Road Precinct.

Out the front you will find a very well looked after lawn, a row of low maintenance Agapanthas across the fence line and a neat little porch, a perfect spot to enjoy a morning coffee, or some wine & cheese in the evening. Stepping into the formal lounge you are greeted by lovely polished

[For full version visit the website](https://www.magain.com.au/property/12-a-moy-avenue-warradale-sa/8438155)

Type : Unit
Price : \$ 515,000
Building Size : 67 sqm
Land Size : 166 sqm
View : <https://www.magain.com.au/property/12-a-moy-avenue-warradale-sa/8438155>



Zoe Ball
08 8381 6000

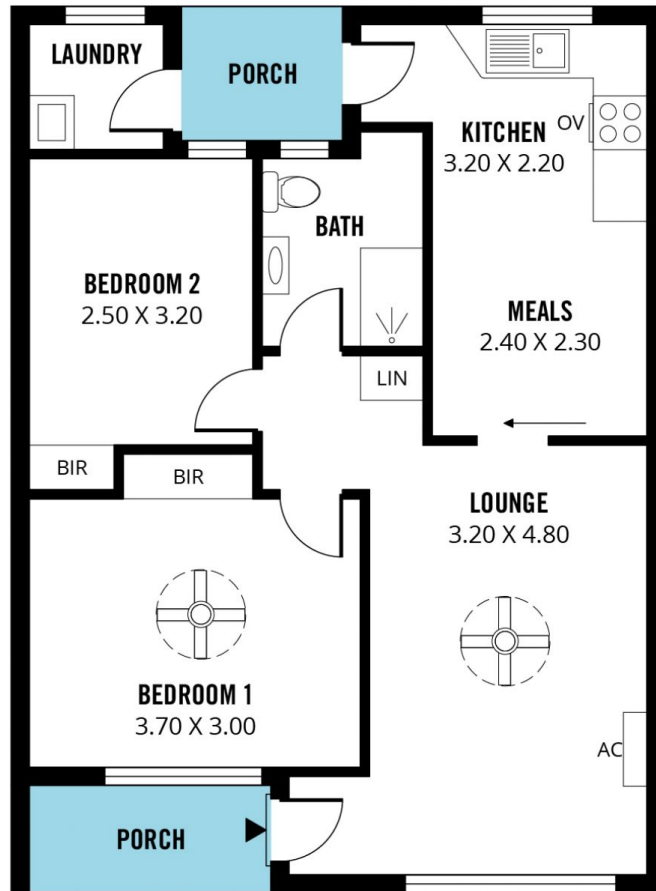


Sam Raven
08 8381 6000

<https://www.magain.com.au>
Magain Real Estate

Shop 15, Woodcroft Market Plaza, 217 Pimpala Road W
08 8381 6000

SHED
1.50 X 0.80



Scale in metres. This drawing is for illustration purposes only. All measurements are approximate and details intended to be relied upon should be independently verified. Produced by **The Fotobase Group**