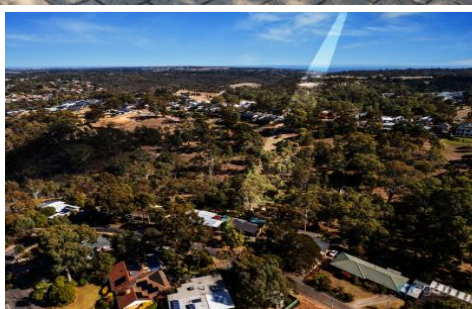


MAGAIN



22 Protea Avenue Coromandel Valley SA

3 2 2

Please contact Karen Heuer or Andrew Boswell from Magain Real Estate for all your property advice.

Welcome to this much-loved home, nestled away on a generous allotment of 1,293 sqm, in a sought-after pocket of the Valley, where time seems to stand still. Owned and cherished by the same family for the past five decades, this residence exudes a rare warmth and character that can only come from years of memories and care.

Welcome to your sanctuary! As you approach, a natural front garden greets you, setting the tone for the tranquillity within. A concrete driveway guides you to a double automated garage, offering both convenience and security for your vehicles.

[For full version visit the website](https://www.magain.com.au/property/22-protea-avenue-coromandel-valley-sa/8438157)

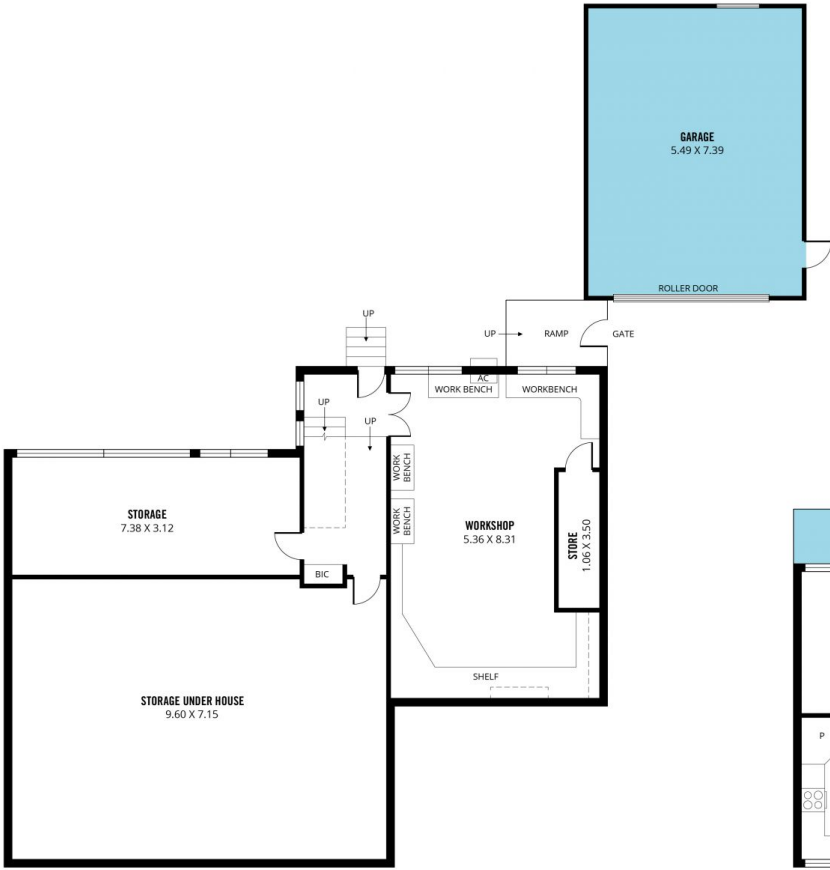
Type : House
Price : \$ 941,000
Land Size : 1293 sqm
View : <https://www.magain.com.au/property/22-protea-avenue-coromandel-valley-sa/8438157>



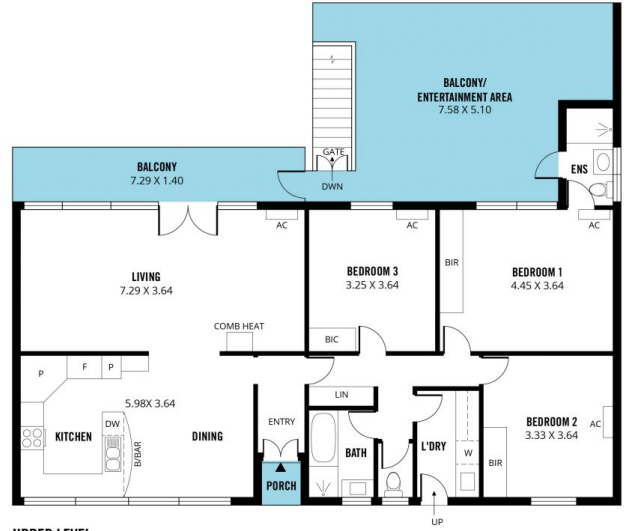
Karen Heuer
08 8381 6000



Andrew Boswell
08 8381 6000



LOWER LEVEL



UPPER LEVEL



Scale in metres. This drawing is for illustration purposes only. All measurements are approximate and details intended to be relied upon should be independently verified.