

MAGAIN



3/12 Manor Court Morphett Vale SA

2 1 1

Please contact Scott McPharlin from Magain Real Estate for all your property advice.

Set in a small group of four, and at the end of a quiet cul-de-sac this sweet and well-maintained unit is an absolute find. Light and neutral throughout this home has a beautiful big open plan living space, two good sized bedrooms, a light and well-maintained bathroom with a proper bath, separate toilet and full-sized laundry. The country style kitchen has lots of cupboards, bench space and appealing neutral finishes.

Easy-care timber laminate flooring through the living and high traffic areas is combined with two carpeted large bedrooms. Both bedrooms have robes, and there's

Type : Unit
Price : \$ 547,000
View : <https://www.magain.com.au/property/312-manor-court-morphett-vale-sa/8438176>

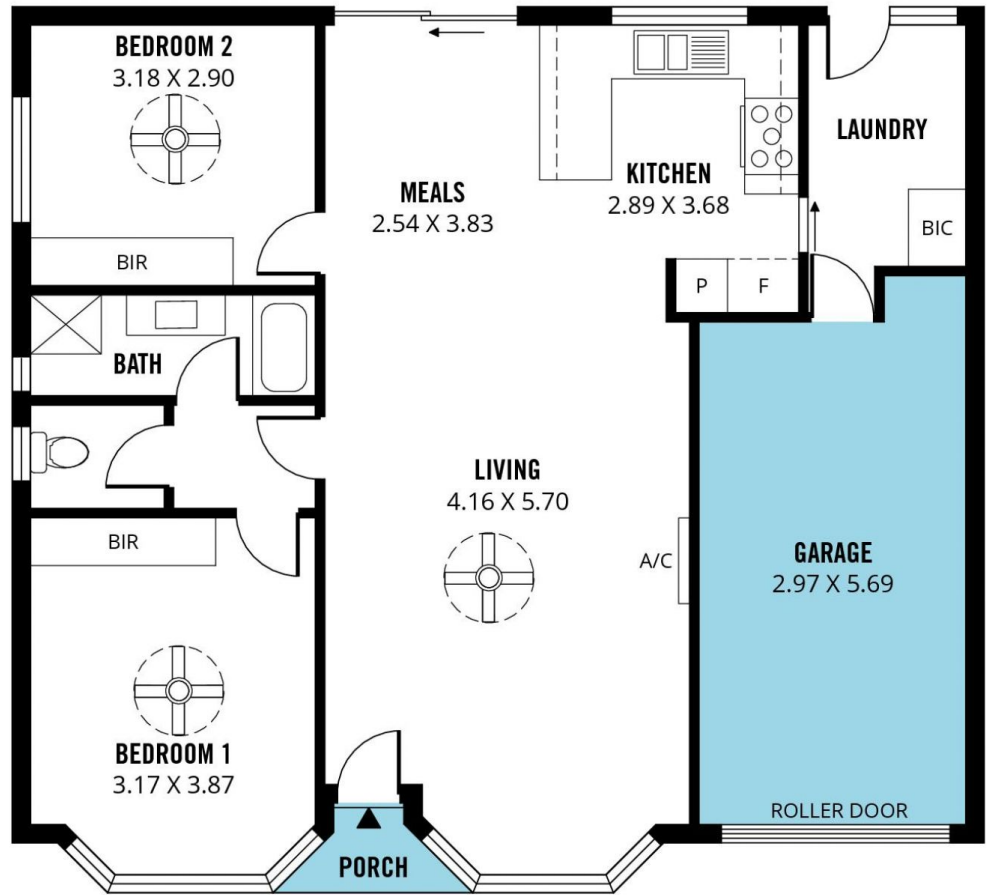
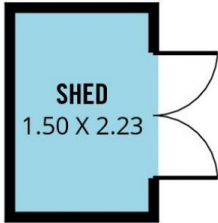


Scott McPharlin
08 8382 0029

[For full version visit the website](https://www.magain.com.au)

<https://www.magain.com.au>
Magain Real Estate

Shop 15, Woodcroft Market Plaza, 217 Pimpala Road W
08 8381 6000



Scale in metres. This drawing is for illustration purposes only. All measurements are approximate and details intended to be relied upon should be independently verified. Produced by **The Fotobase Group**