

MAGAIN



43 Nash Crescent Morphett Vale SA

3  1  2 

Please contact Mike Dobbin and Zoe Ball from Magain Real Estate for all your property advice.

Overlooking a large reserve & playground at the end of a cul-de-sac this neatly presented home represent great value for those looking to get into the market, or investors looking for their first rental property. This low maintenance home would also be a perfect size for those looking to downsize who need room for a caravan as there is a large concrete pad perfect for a caravan or motorhome.

The Functional floor plan offers;

Three good size bedrooms, master featuring a walk in robe, ceiling fan & air conditioning, plus built in robes to the

[For full version visit the website](https://www.magain.com.au/property/43-nash-crescent-morphett-vale-sa/8438207)

Type : House
Price : \$ 625,000
Building Size : 110 sqm
Land Size : 455 sqm
View : <https://www.magain.com.au/property/43-nash-crescent-morphett-vale-sa/8438207>



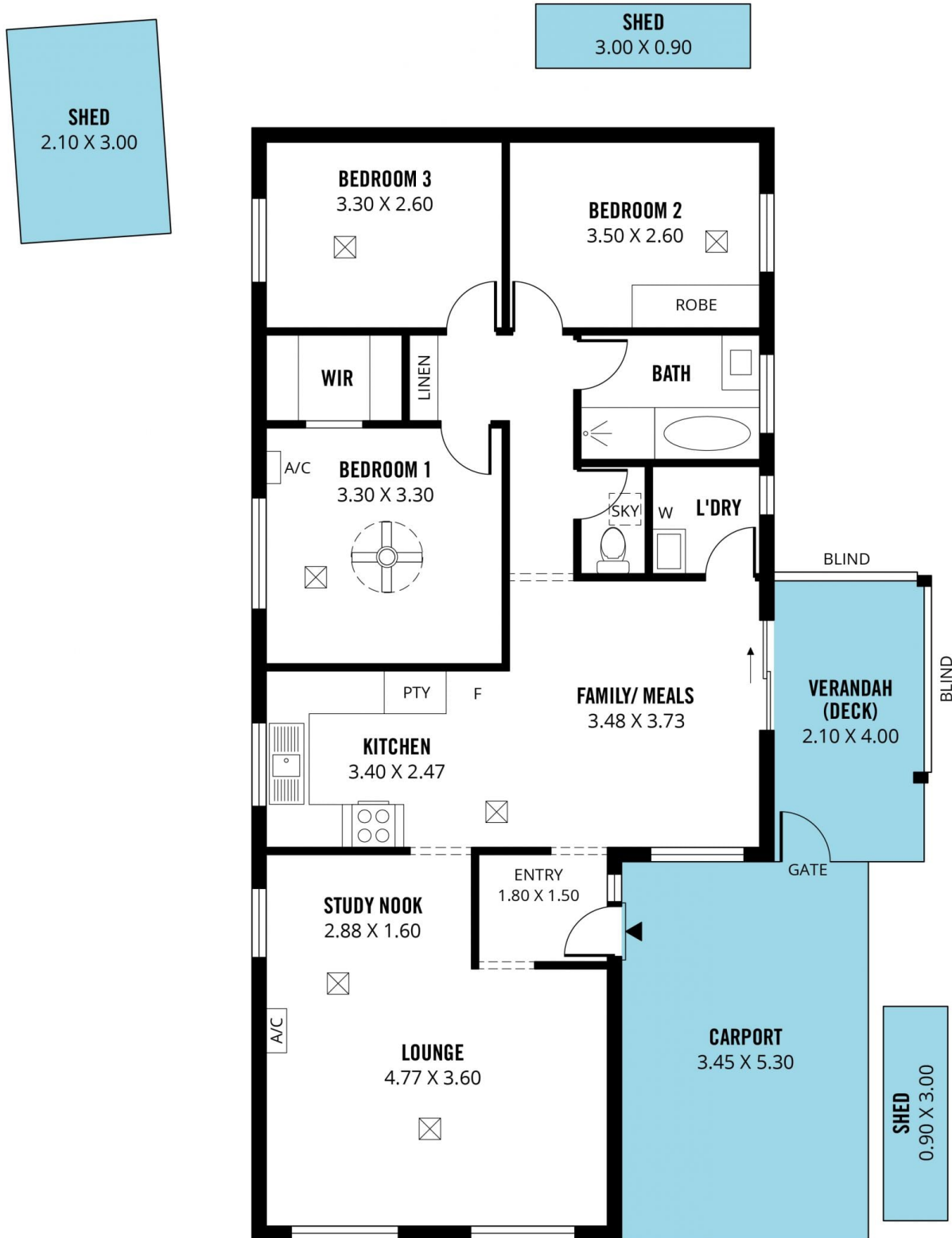
Zoe Ball
08 8381 6000



Sam Raven
08 8381 6000

<https://www.magain.com.au>
Magain Real Estate

Shop 15, Woodcroft Market Plaza, 217 Pimpala Road W
08 8381 6000



Scale in metres. This drawing is for illustration purposes only. All measurements are approximate and details intended to be relied upon should be independently verified. Produced by **The Fotobase Group**