

MAGAIN



8 Shiraz Court Aberfoyle Park SA

4 2 4

Please contact Andrew Boswell or Karen Heuer from Magain Real Estate for all your property advice.

This stunning executive home offers a contemporary interior with classy finishes, custom features, and a full-sized, floodlit tennis court, all set on an expansive block.

The updated kitchen is the hub of the home with fantastic feature windows giving you plenty of outside light and views whilst being able to be included in the meals and family area activities. Featuring top-of-the-line appliances including an integrated Miele dishwasher, built-in microwave, induction cooktop, and a spacious Butlers pantry. There is storage galore both inside the kitchen and pantry. Stone benchtops and seamless porcelain

Type : House
Building Size : 213 sqm
Land Size : 1499 sqm
View : <https://www.magain.com.au/property/8-shiraz-court-aberfoyle-park-sa/8438242>



Andrew Boswell
08 8381 6000

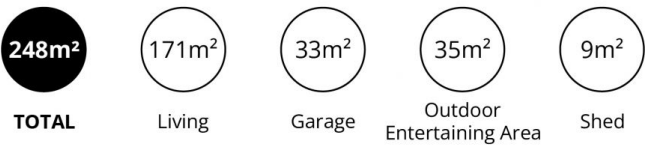
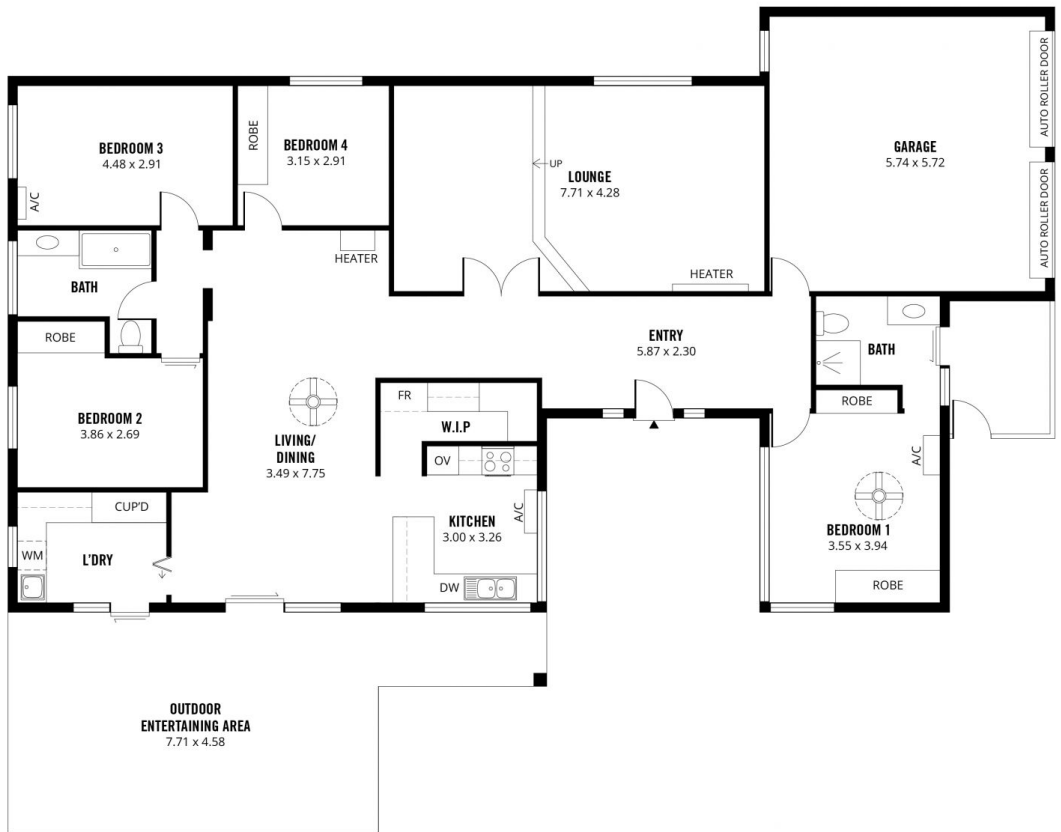


Karen Heuer
08 8381 6000

[For full version visit the website](https://www.magain.com.au)

<https://www.magain.com.au>
Magain Real Estate

Shop 15, Woodcroft Market Plaza, 217 Pimpala Road W
08 8381 6000



Scale in metres. This drawing is for illustration purposes only. All measurements are approximate and details intended to be relied upon should be independently verified.

Produced by **The Fotobase Group**