

MAGAIN



3 Workara Terrace Morphett Vale SA

3 2 2

Please contact Mike Dobbin or Zoe Ball from Magain Real Estate for all your property advice.

Located in the heart of Morphett Vale, this 2013 built home is superbly positioned with close proximity to shops, schools, transport and load of amenities and facilities including the newly updated Knox Park.

The formal entry leads to the master bedroom with roller shutters, walk in robe and sparkling ensuite and flows through to a further two bedrooms both with built in robes and both positioned to access the main bathroom with separate vanity area, shower and bath and separate toilet. At the rear of the home you will find a spacious open plan lounge/dining with appealing timber laminate flooring

[For full version visit the website](https://www.magain.com.au/property/3-workara-terrace-morphett-vale-sa/8438243)

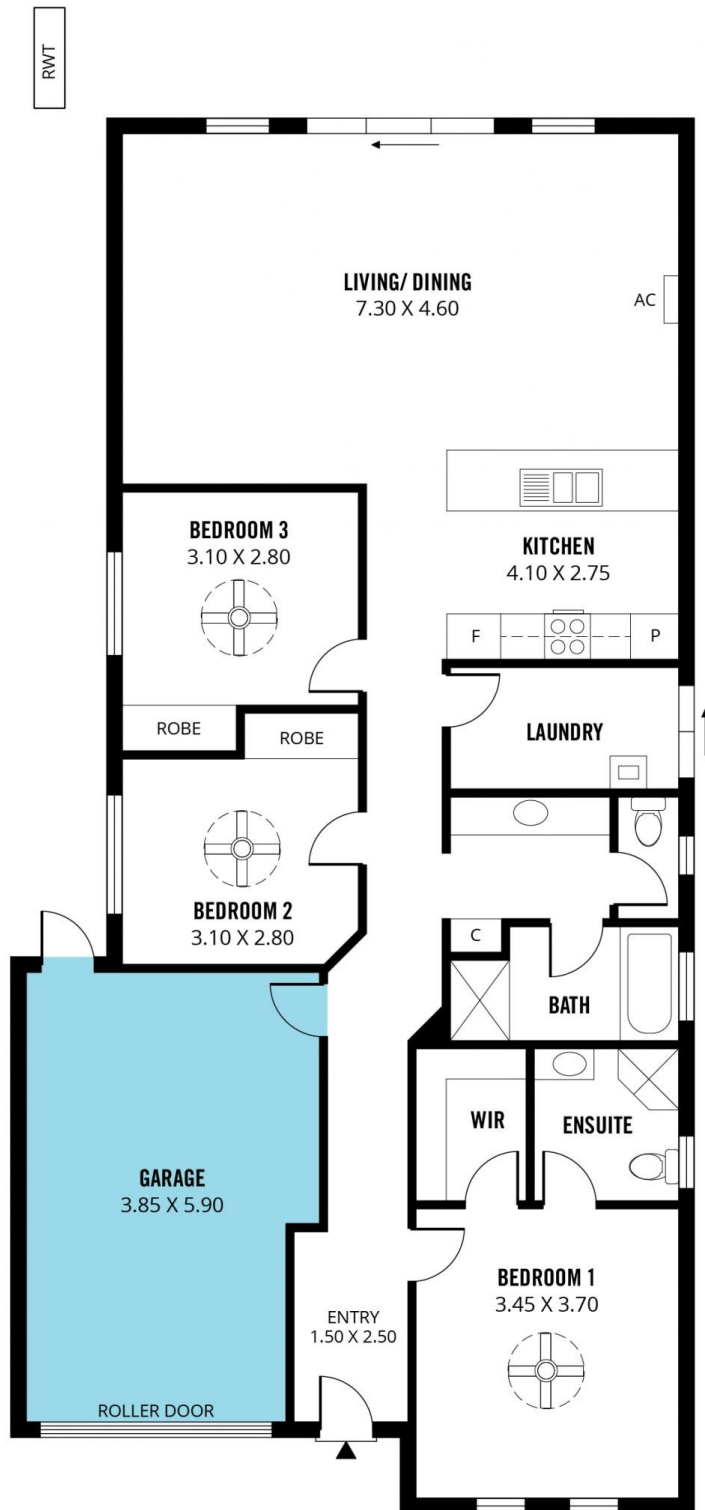
Type : House
Price : \$ 650,000
Building Size : 132 sqm
Land Size : 379 sqm
View : <https://www.magain.com.au/property/3-workara-terrace-morphett-vale-sa/8438243>



Sam Raven
08 8381 6000

<https://www.magain.com.au>
Magain Real Estate

Shop 15, Woodcroft Market Plaza, 217 Pimpala Road W
08 8381 6000



Scale in metres. This drawing is for illustration purposes only. All measurements are approximate and details intended to be relied upon should be independently verified.

Produced by **The Fotobase Group**