

MAGAIN



38 Woodcroft Drive Morphett Vale SA

3 1 3

Please contact Scott McPharlin from Magain Real Estate for all your property advice.

Neat and tidy established gardens lead to a delightful, fully renovated home. Freshly painted, with new floor coverings, plus updated kitchen and bathroom, there's nothing to do here but sit down and relax. The bright, neutral colour palette lends itself to whatever furnishings and artwork you wish to bring. In addition to the single carport there's room for a caravan PLUS access to a huge 9.8m x 6.9m garage at the rear with concrete floor and power! Perfect for those that like cars, have lots of 'stuff' or like to work on home projects.

So many details have been thought of here, creating a

[For full version visit the website](https://www.magain.com.au/property/38-woodcroft-drive-morphett-vale-sa/8438255)

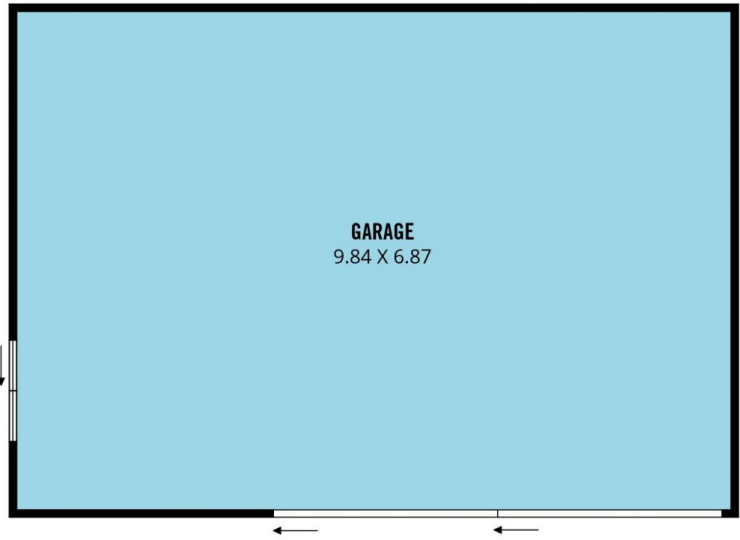
Type : House
Price : \$ 778,000
Land Size : 663 sqm
View : <https://www.magain.com.au/property/38-woodcroft-drive-morphett-vale-sa/8438255>



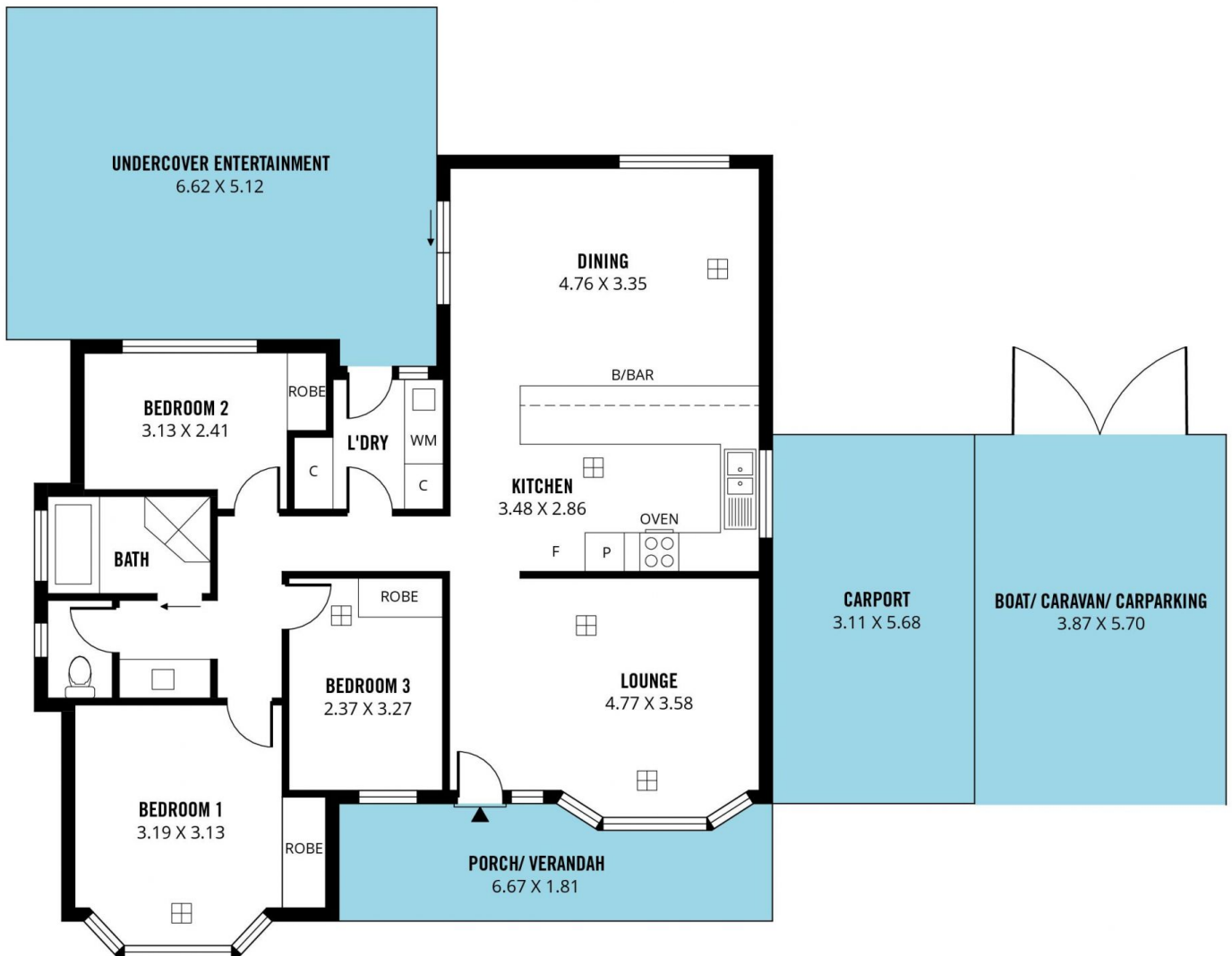
Scott McPharlin
08 8382 0029

<https://www.magain.com.au>
Magain Real Estate

Shop 15, Woodcroft Market Plaza, 217 Pimpala Road W
08 8381 6000



NOT IN POSITION



Scale in metres. This drawing is for illustration purposes only. All measurements are approximate and details intended to be relied upon should be independently verified.

Produced by **The Fotobase Group**