

MAGAIN



12 David Crescent Christie Downs SA

3 1 3

Please contact Scott McPharlin from Magain Real Estate for all your property advice.

Set on a big corner block of around 840m2 , this neat little home is ready for a new owner. Perfect for investors with potential for development down the track (STCC). In the interim the home itself is perfectly liveable.

Light and bright throughout with a neutral decor and in good condition, there's 3 decent bedrooms, two with robes, a large lounge, neutral kitchen with ample cupboards overlooking the dining space, plus a family bathroom with full size bath, separate toilet and separate laundry.

A big traditional grassy back yard awaits, with a

[For full version visit the website](https://www.magain.com.au/property/12-david-crescent-christie-downs-sa/8438259)

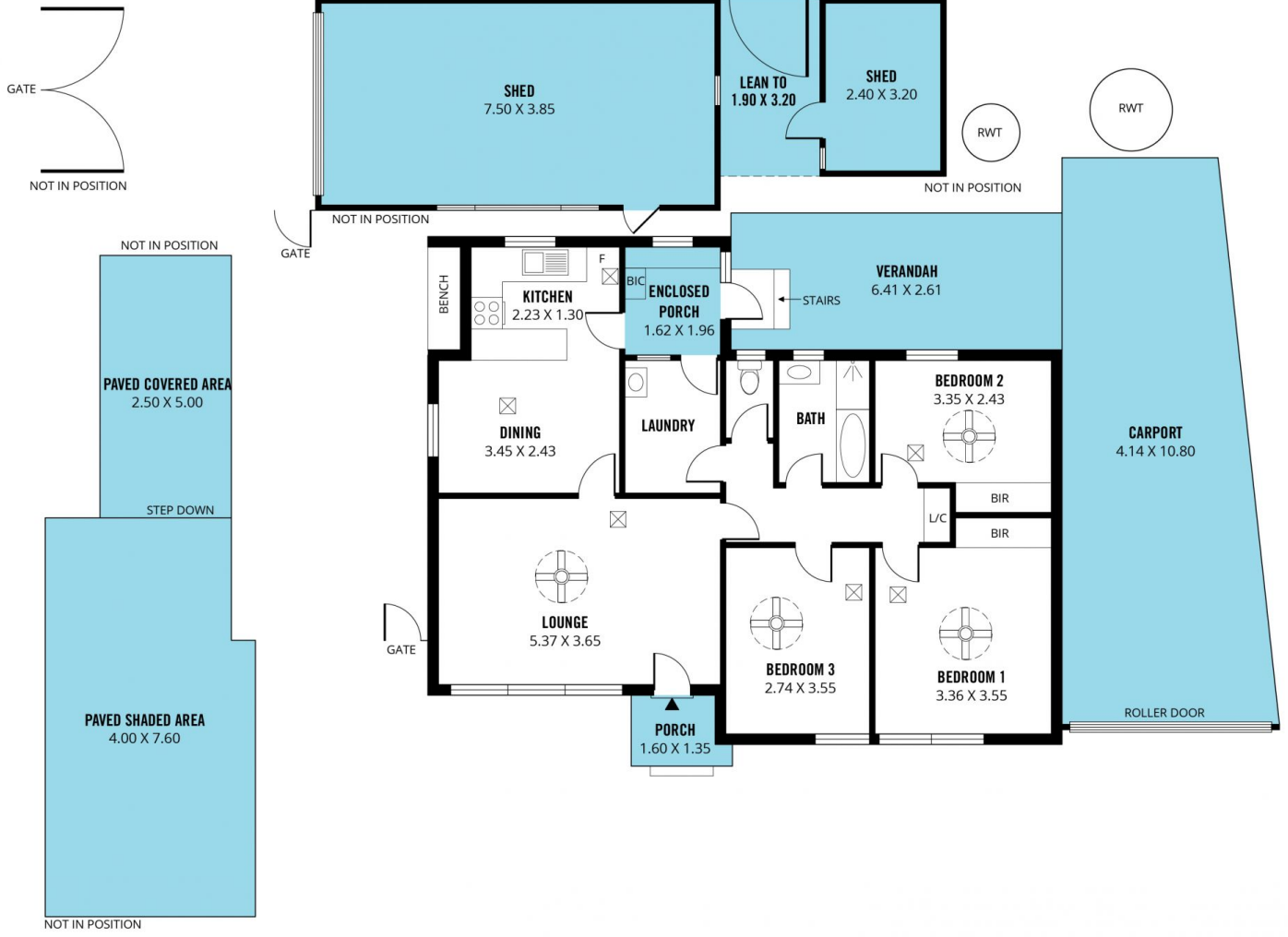
Type : House
Price : \$ 700,000
Building Size : 98 sqm
Land Size : 840 sqm
View : <https://www.magain.com.au/property/12-david-crescent-christie-downs-sa/8438259>



Scott McPharlin
08 8382 6000

<https://www.magain.com.au>
Magain Real Estate

Shop 15, Woodcroft Market Plaza, 217 Pimpala Road W
08 8381 6000



Scale in metres. This drawing is for illustration purposes only. All measurements are approximate and details intended to be relied upon should be independently verified.

Produced by The Fotobase Group