

# MAGAIN



## 28 Berrin Road Morphett Vale SA

3 1 1

Please contact Mike Dobbin and Zoe Ball from Magain Real Estate for all your property advice.

Set on a spacious 840 m<sup>2</sup> block, this original solid brick home has been recently updated with fresh paint throughout and brand new carpet too. The functional floor plan offers three generously sized bedrooms, two living areas, a spacious kitchen, and a dining area with an outdoor entertaining space that overlooks a large backyard. Whether you're looking to update for your family or considering future development plans (STCC), this home has endless potential.

Inside, you'll find a large lounge room featuring brand-new carpet, a ceiling fan, and split system air conditioning.

[For full version visit the website](https://www.magain.com.au/property/28-berrin-road-morphett-vale-sa/8438262)

**Type** : House  
**Price** : \$ 705,000  
**Building Size** : 155 sqm  
**Land Size** : 840 sqm  
**View** : <https://www.magain.com.au/property/28-berrin-road-morphett-vale-sa/8438262>



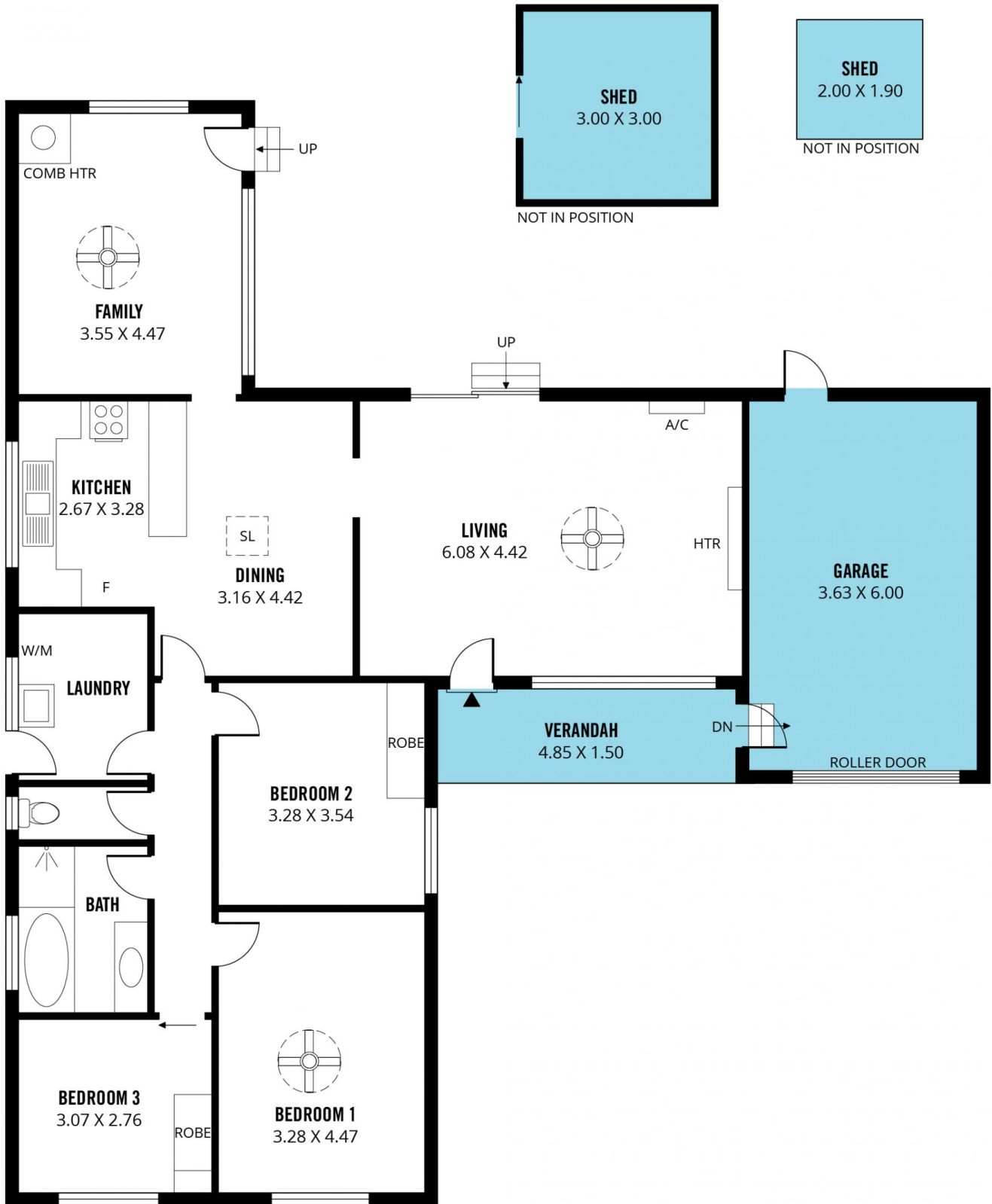
**Zoe Ball**  
08 8381 6000



**Lindy Kriticos**  
08 8381 6000

<https://www.magain.com.au>  
Magain Real Estate

Shop 15, Woodcroft Market Plaza, 217 Pimpala Road W  
08 8381 6000



Scale in metres. This drawing is for illustration purposes only. All measurements are approximate and details intended to be relied upon should be independently verified.

Produced by **The Fotobase Group**