

# MAGAIN



## 31 Copernicus Road Christie Downs SA

3 1 2

Please contact Scott McPharlin from Magain Real Estate for all your property advice.

This 3-bedroom home boasts a huge second living area, a lovely big, updated kitchen and real polished timber floorboards. Set on a traditional block there's plenty of room for families, with a fenced front yard providing additional outdoor space. There's a big verandah plus a large, paved area out the back too, great for barbeques and kids' birthday parties.

The kitchen is huge. It's light and bright with a pale neutral colour scheme and skylight. A recently installed dishwasher is certainly appreciated, as is the extra large fridge space, abundance of cupboards and space for a kitchen table. The

[For full version visit the website](https://www.magain.com.au/property/31-copernicus-road-christie-downs-sa/8438263)

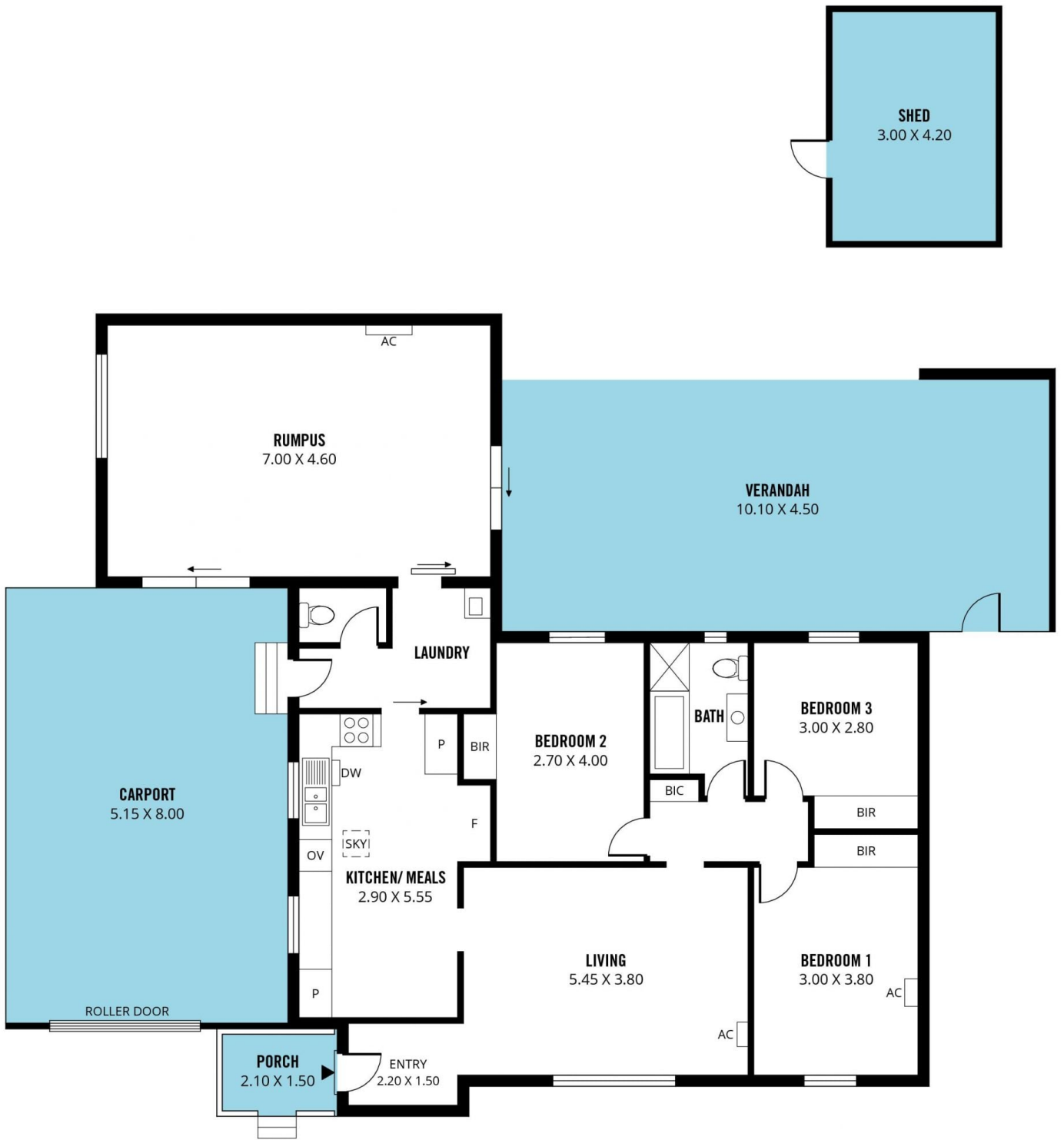
**Type** : House  
**Price** : \$ 635,000  
**Building Size** : 133 sqm  
**Land Size** : 700 sqm  
**View** : <https://www.magain.com.au/property/31-copernicus-road-christie-downs-sa/8438263>



**Scott McPharlin**  
08 8381 6000

<https://www.magain.com.au>  
Magain Real Estate

Shop 15, Woodcroft Market Plaza, 217 Pimpala Road W  
08 8381 6000



Scale in metres. This drawing is for illustration purposes only. All measurements are approximate and details intended to be relied upon should be independently verified.

Produced by **The Fotobase Group**