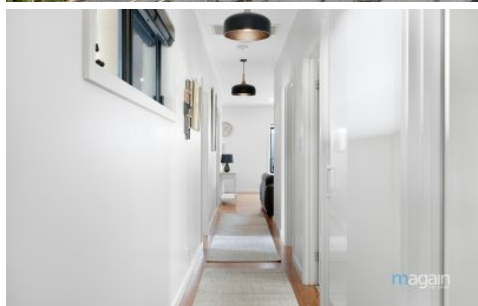


# MAGAIN



## 19 Wooldridge Street Morphett Vale SA

3  1  2 

Please contact Baz Rampal from Magain Real Estate for all your property advice.

Set in a peaceful, tree-lined street, this impeccably presented 2013-built courtyard home offers modern design, premium finishes, and spacious, low-maintenance living. With shopping, transport, and the scenic Christies Creek walking trails just moments away, this property combines lifestyle, convenience, and tranquillity.

### Key Features:

- Open-plan lounge and dining area, ideal for comfortable living and entertaining
- Sliding door access to a private outdoor entertaining courtyard with a pergola and gas outlet for BBQs

[For full version visit the website](https://www.magain.com.au/property/19-wooldridge-street-morphett-vale-sa/8438269)

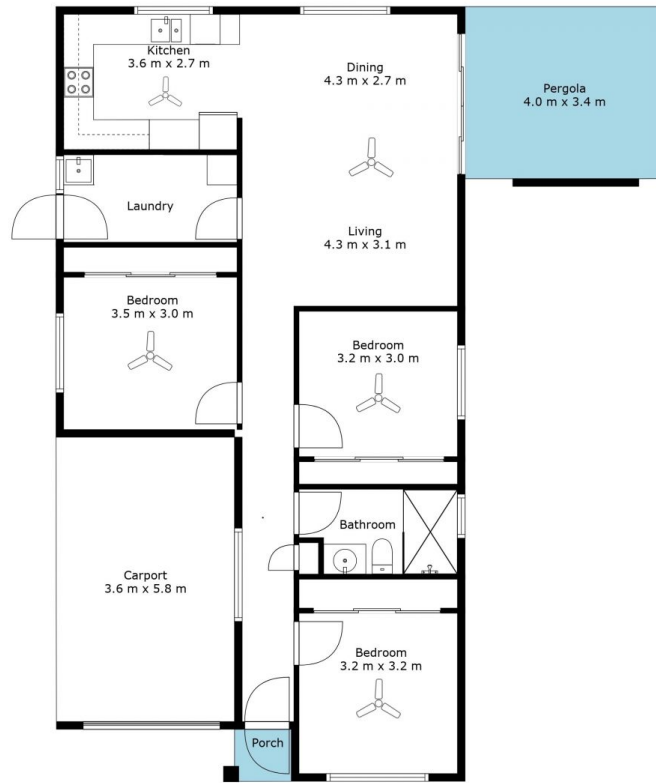
**Type** : House  
**Price** : \$ 700,000  
**Building Size** : 133 sqm  
**Land Size** : 247 sqm  
**View** : <https://www.magain.com.au/property/19-wooldridge-street-morphett-vale-sa/8438269>



**Bharat Rampal**  
08 8381 6000

<https://www.magain.com.au>  
Magain Real Estate

Shop 15, Woodcroft Market Plaza, 217 Pimpala Road W  
08 8381 6000



Living	102 SQM
Carport	21 SQM
Pergola & Porch	19 SQM
<b>Total Approx</b>	<b>142 SQM</b>

Scale in metres. This drawing is for illustration purposes only.  
 All measurements are approximate and details intended to be relied upon should be independently verified.

