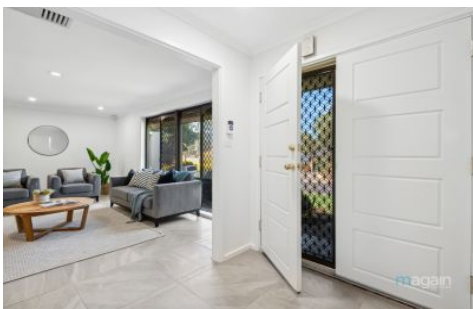


MAGAIN



20 Antilla Way Flagstaff Hill SA

3 2 2

Please contact Karen Heuer or Andrew Boswell from Magain Real Estate for all your property advice.

Nestled in the heart of the ever popular Flagstaff Hill, this impressive family home boasts exceptional kerbside appeal with lush landscaped gardens.

Designed for comfort and versatility, the flexible, generous floor plan carves out multiple living zones, each a sanctuary in its own right, promising both privacy and communal harmony. Featuring three generous size bedrooms, including a master suite with a private parent's retreat, a modern ensuite, a walk-in robe as well as a built-in robe.

Type : House
Building Size : 160 sqm
Land Size : 725 sqm
View : <https://www.magain.com.au/property/20-antilla-way-flagstaff-hill-sa/8438279>



Karen Heuer
08 8381 6000



Andrew Boswell
08 8381 6000

[For full version visit the website](https://www.magain.com.au)

<https://www.magain.com.au>
Magain Real Estate

Shop 15, Woodcroft Market Plaza, 217 Pimpala Road W
08 8381 6000

