

# MAGAIN



## 23 Panorama Crescent Reynella SA

3 1 1

Please contact Scott McPharlin from Magain Real Estate for all your property advice.

Situated on a big block of around 720m<sup>2</sup>, and with a 24.7m frontage, who knows what the future holds for this home. Right now, it exudes warmth, character and such a homely feel. High ceilings and real timber floors, big windows, and lots of light make it so inviting. You can feel the love and cherished memories it has brought to the family currently residing here.

Inside you'll find a large lounge room with timber French doors, a light and neutral kitchen/meals area with lots of cupboards, 3 generous bedrooms, a family bathroom with full-sized bath and separate loo, and a good sized laundry.

[For full version visit the website](https://www.magain.com.au/property/23-panorama-crescent-reynella-sa/8438292)

**Type** : House  
**Price** : \$ 679,000  
**Land Size** : 720 sqm  
**View** : <https://www.magain.com.au/property/23-panorama-crescent-reynella-sa/8438292>



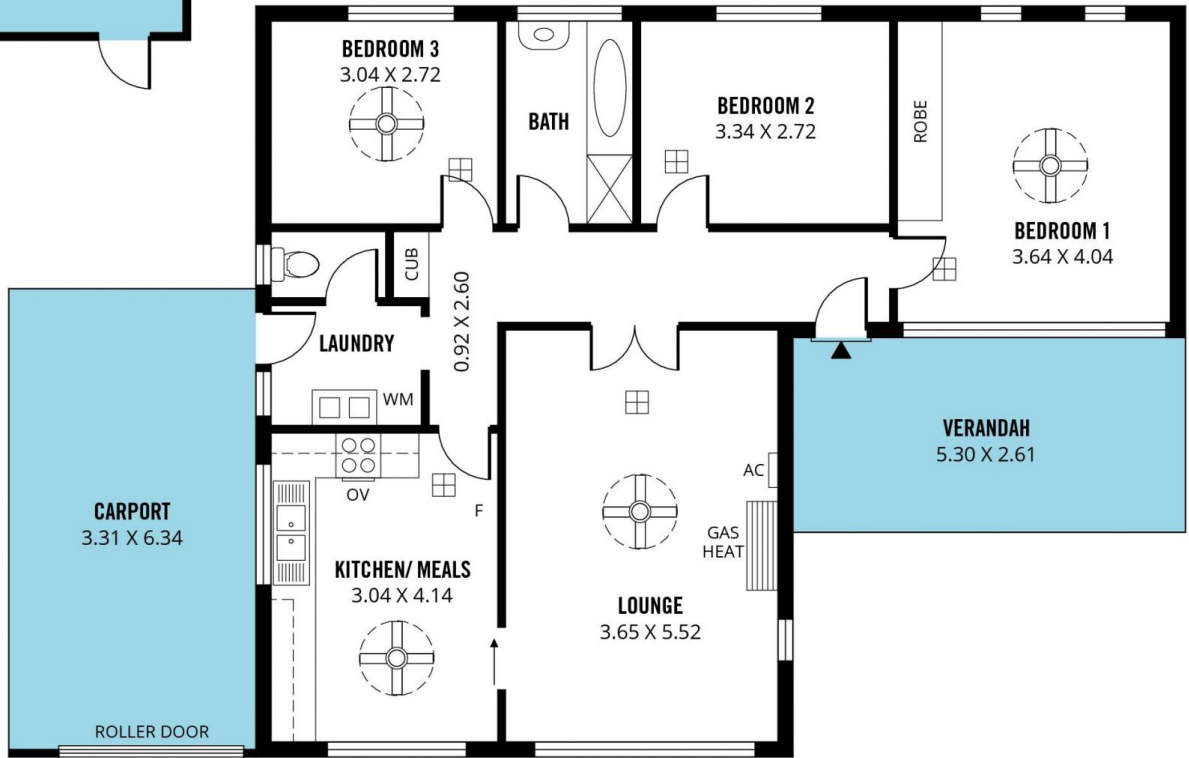
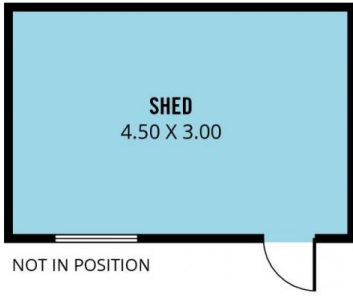
**Scott McPharlin**  
08 8382 0029



**Patrick Chay**  
08 8382 0029

<https://www.magain.com.au>  
Magain Real Estate

Shop 15, Woodcroft Market Plaza, 217 Pimpala Road W  
08 8381 6000



Scale in metres. This drawing is for illustration purposes only. All measurements are approximate and details intended to be relied upon should be independently verified.

Produced by **The Fotobase Group**