

MAGAIN



11 Coleridge Drive Salisbury Park SA

3 1 3

Please contact Mike Dobbin and Zoe Ball from Magain Real Estate for all your property advice.

Nestled in the picturesque Carisbrook Park Estate, this well-presented three-bedroom family home offers a thoughtfully designed floor plan, generous shedding, and inviting outdoor living, all set on a spacious 710sqm block.

Upon entry, you're welcomed by a hallway with a skylight that fills the space with natural light. All three bedrooms feature built-in robes, while two include ceiling fans for added comfort. The formal lounge is both spacious and light-filled, offering a peaceful view over the front garden and a ceiling fan for year-round comfort.

[For full version visit the website](https://www.magain.com.au/property/11-coleridge-drive-salisbury-park-sa/8438362)

Type : House
Price : \$ 700,000
Building Size : 150 sqm
Land Size : 710 sqm
View : <https://www.magain.com.au/property/11-coleridge-drive-salisbury-park-sa/8438362>



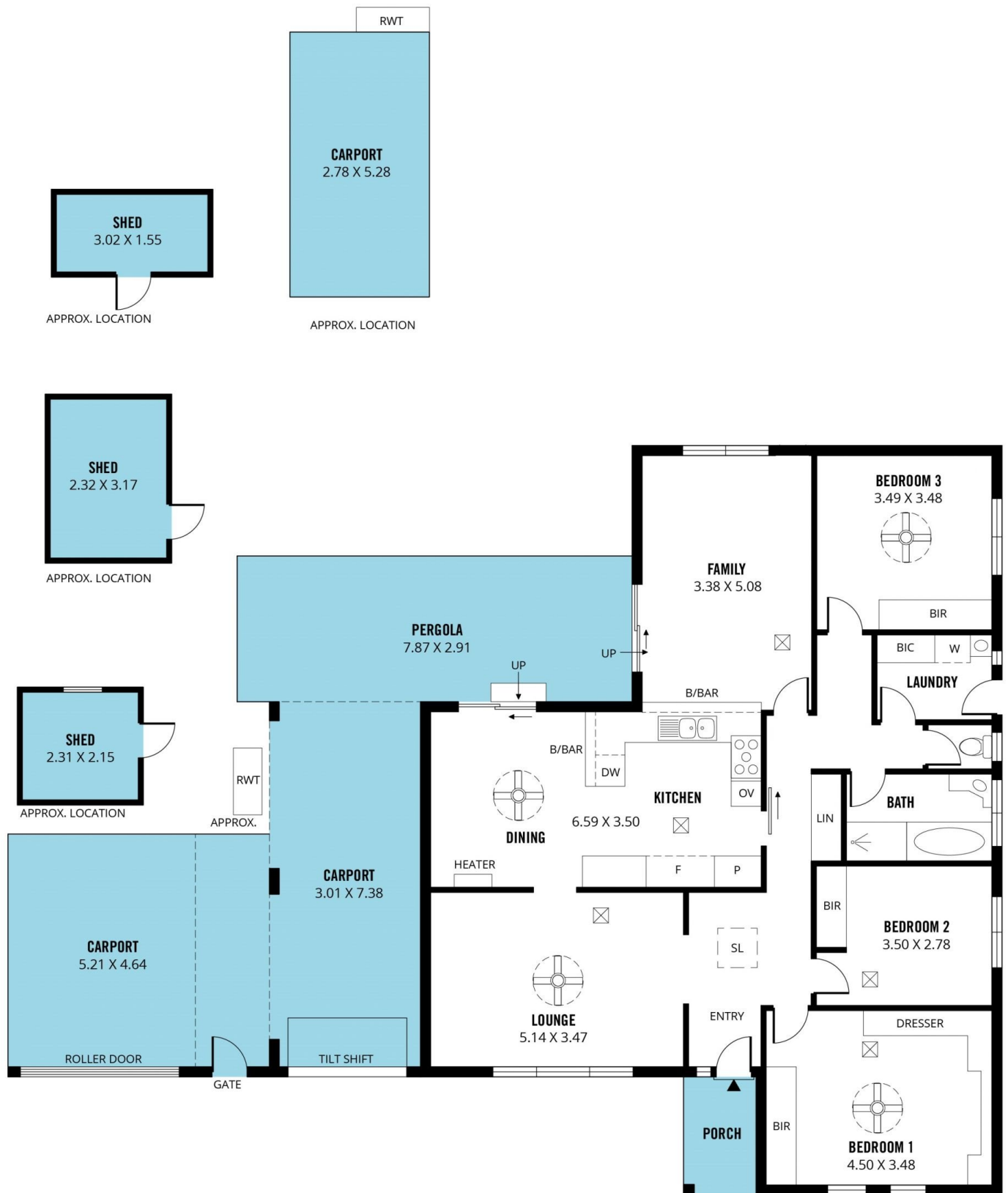
Zoe Ball
08 8381 6000



Sam Raven
08 8381 6000

<https://www.magain.com.au>
Magain Real Estate

Shop 15, Woodcroft Market Plaza, 217 Pimpala Road W
08 8381 6000



Scale in metres. This drawing is for illustration purposes only. All measurements are approximate and details intended to be relied upon should be independently verified.

Produced by **The Fotobase Group**