

MAGAIN



6/9-15 Cudmore Terrace Marlestone SA

2 1 2

Please contact Baz Rampal from Magain Real Estate for all your property advice

Set in the ever-popular suburb of Marlestone, this two-bedroom unit offers a fantastic opportunity for first-home buyers, investors, or those looking to downsize.

Inside, you're greeted by a spacious, freshly painted front living area with timber floorboards-perfect for relaxing or entertaining. The dining space flows seamlessly from the living area and features a linen cupboard for extra storage.

The kitchen is original but functional, complete with a brand new gas stove, electric oven, and a pleasant outlook to the

[For full version visit the website](https://www.magain.com.au/property/69-15-cudmore-terrace-marlestone-sa/8438391)

Type : Unit
Price : \$ 616,000
Building Size : 103 sqm
Land Size : 263 sqm
View : <https://www.magain.com.au/property/69-15-cudmore-terrace-marlestone-sa/8438391>



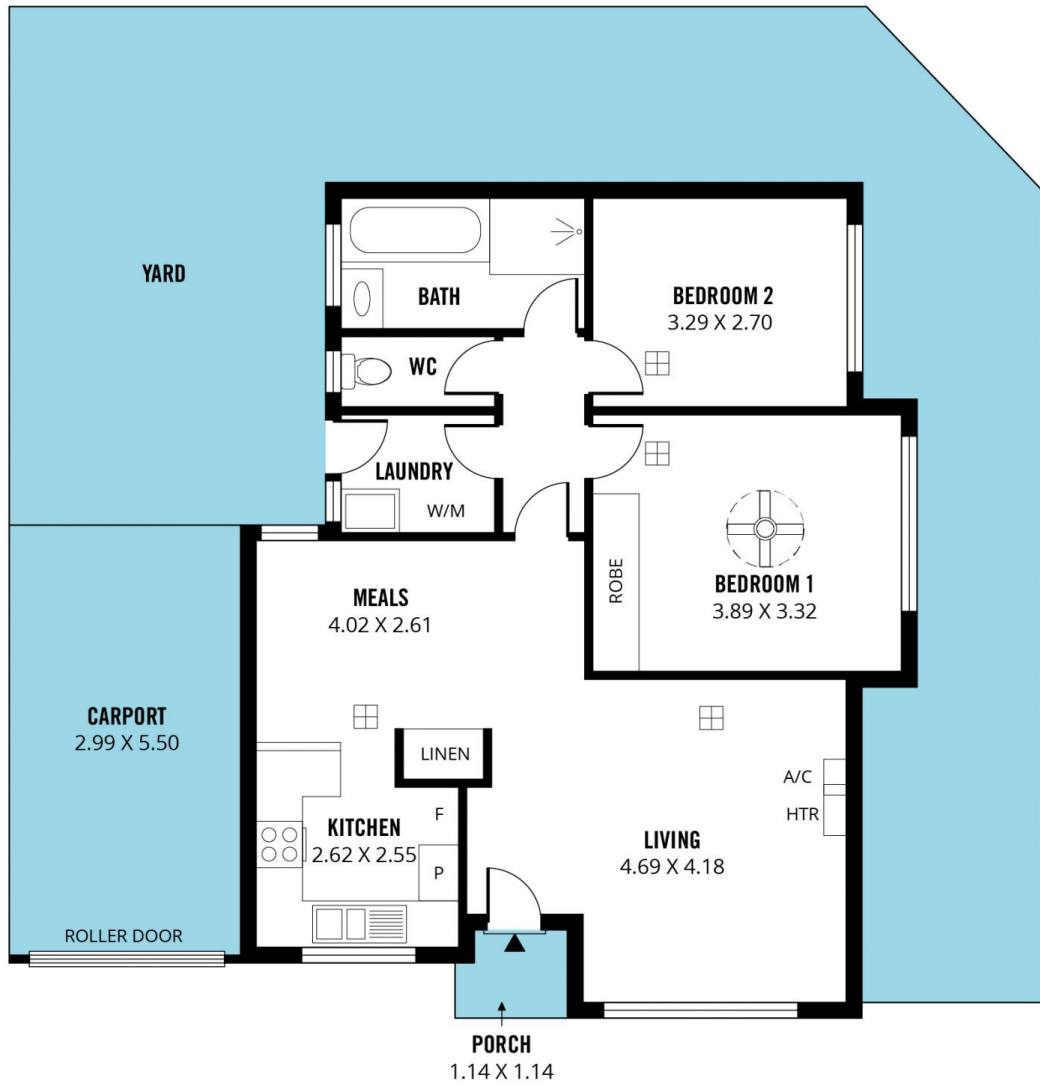
Sam Raven
08 8381 6000



Baz Rampal
08 8381 6000

<https://www.magain.com.au>
Magain Real Estate

Shop 15, Woodcroft Market Plaza, 217 Pimpala Road W
08 8381 6000



Scale in metres. This drawing is for illustration purposes only. All measurements are approximate and details intended to be relied upon should be independently verified.

Produced by **The Fotobase Group**