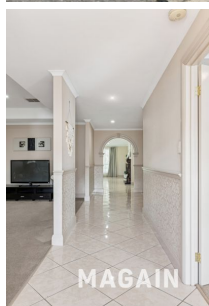


MAGAIN



23-31 New York Road Aberfoyle Park SA

5 2 2

Set on a rare and expansive 1,752sqm (approx.) allotment, this substantial family home offers the perfect combination of space, comfort, and character-ideal for large or growing families seeking room to move both inside and out. Backing directly onto a peaceful reserve filled with native wildlife-including visits from kookaburras and koalas-this is a lifestyle opportunity that blends tranquil surroundings with practical family living.

Step inside to discover a generous and thoughtfully designed floorplan boasting five double bedrooms. The master suite is positioned privately at the front of the home and features a charming bay window, walk-in robe, and ensuite, while the remaining four bedrooms are located in a separate wing, all with built-in robes and serviced by a

[For full version visit the website](https://www.magain.com.au/property/23-31-new-york-road-aberfoyle-park-sa/8438395)

Type : House
Price : \$925k - \$985k
Building Size : 225 sqm
Land Size : 1752 sqm
View : <https://www.magain.com.au/property/23-31-new-york-road-aberfoyle-park-sa/8438395>



Sam Raven
08 8381 6000



Baz Rampal
08 8381 6000

<https://www.magain.com.au>
Magain Real Estate

Shop 15, Woodcroft Market Plaza, 217 Pimpala Road W
08 8381 6000

