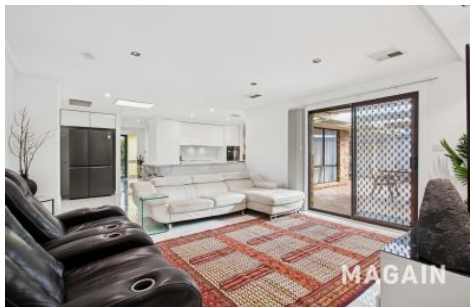


MAGAIN



2 Wellesley Street Huntfield Heights SA

4 2 4

Set on a generous block and boasting a thoughtfully designed layout, this beautifully presented four-bedroom home offers a perfect combination of functionality and comfort. With multiple living areas, a huge outdoor entertaining space, and a well-equipped kitchen at the heart of the home, this property is ideal for families looking for room to grow or investors wanting solid rental appeal.

Step through the welcoming entry hall into a spacious lounge that flows effortlessly into the open dining and kitchen area. The kitchen features ample bench space, a breakfast bar, pantry, dishwasher, oven, and induction cooktop-perfect for entertaining or everyday family meals. The adjoining family/meals area offers flexibility and connects seamlessly to the expansive undercover outdoor

Type : House
Price : \$745k - \$790k
Land Size : 747 sqm
View : <https://www.magain.com.au/property/2-wellesley-street-huntfield-heights-sa/8443516>



Andrew Robey
08 8366 2292

[For full version visit the website](https://www.magain.com.au)

<https://www.magain.com.au>
Magain Real Estate

52 Hillier Road Morphett Vale SA
08 8366 2292



Scale in metres. This drawing is for illustration purposes only. All measurements are approximate and details intended to be relied upon should be independently verified.

Produced by **The Fotobase Group**

