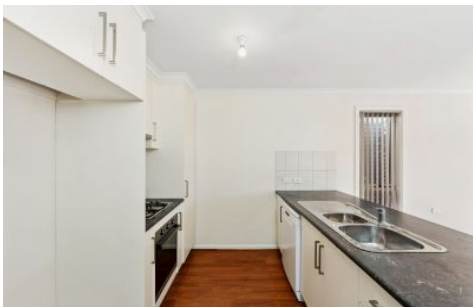


# MAGAIN



**45 Graeber Road Smithfield Plains SA**

**3** **1** **2**

**FAST FACTS:**

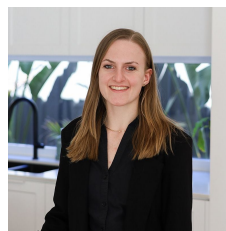
- > \$530/week
- > available now

**DESCRIPTION:**

- > 3 bedrooms, one walk-in robe, 2 BIR
- > approx. 30 km northeast of the CBD, located in the City of Playford
- > excellent schools close by: John Hartley School, Mark Oliphant College and more
- > low maintenance front and rear garden areas
- > secure parking, carport and fencing at rear and side front
- > transport convenience: near Smithfield railway station and major roads - perfect for commuting
- > Munno Para Shopping City nearby: parks, reserves and

**Type** : House

**View** : <https://www.magain.com.au/property/45-graeber-road-smithfield-plains-sa/8453237>



**Nadine Stenzel**  
**0405 518 477**

[For full version visit the website](https://www.magain.com.au)

<https://www.magain.com.au>  
Magain Real Estate

104 Payneham Road Stepney SA  
08 8212 5899

