

MAGAIN



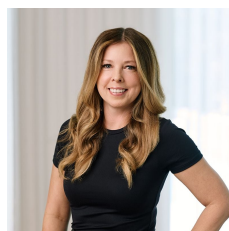
7 Clydesdale Court Woodcroft SA

4 2 4

From the street, the scene is set - lush greenery frames a picturesque front yard, two separate driveways offer choice and convenience, and the home's warm, welcoming façade hints at the space and versatility within.

Step inside, and you're greeted by a soft carpeted front living room, a relaxed retreat with sliding glass doors leading straight to the outdoor entertaining area. The kitchen is well equipped and generous in storage, its own separate hallway pantry, while overhead skylights invite the daylight in. The second living area enjoys this same airy brightness, with another set of sliding doors opening out to the outdoors - creating a flow that's perfect for both quiet mornings and lively gatherings.

Type : House
Price : \$1m - \$1.1m
Building Size : 154 sqm
Land Size : 971 sqm
View : <https://www.magain.com.au/property/7-clydesdale-court-woodcroft-sa/8455068>



Zoe Ball
08 8381 6000



Baz Rampal
08 8381 6000

[For full version visit the website](https://www.magain.com.au)

<https://www.magain.com.au>
Magain Real Estate

Shop 15, Woodcroft Market Plaza, 217 Pimpala Road W
08 8381 6000



Scale in metres. This drawing is for illustration purposes only. All measurements are approximate and details intended to be relied upon should be independently verified.

Produced by **The Fotobase Group**