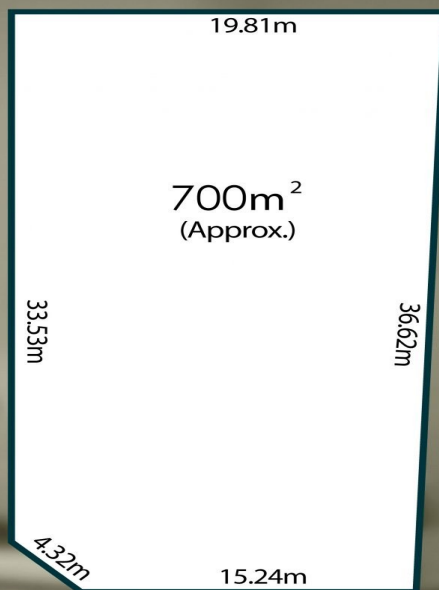


MAGAIN



19 THAMES DRIVE, REYNELLA

Scale in metres. This drawing is for illustration purposes only.
All measurements are approximate and details intended to be relied upon should be independently verified.



19 Thames Drive Reynella SA

3 1 4

Please contact Robbie Leigh or Levi Sakkas from Magain Real Estate for further information.

Perfectly positioned in a sought-after pocket of Reynella, 19 Thames Drive presents a rare opportunity with its generous 700m² corner allotment (STCC), ready to move in, rent out or future development

Offering plenty of space and a functional floorplan, this home offers three bedrooms, central main bathroom, two versatile living areas perfect for families or entertaining. kitchen and dining area while the main lounge is enhanced with reverse cycle heating and cooling for year-round comfort.

[For full version visit the website](https://www.magain.com.au)

Type : House
Price : Best Offer (Price Guide \$700k)
Building Size : 123 sqm
Land Size : 700 sqm
View : <https://www.magain.com.au/property/19-thames-drive-reynella-sa/8455199>



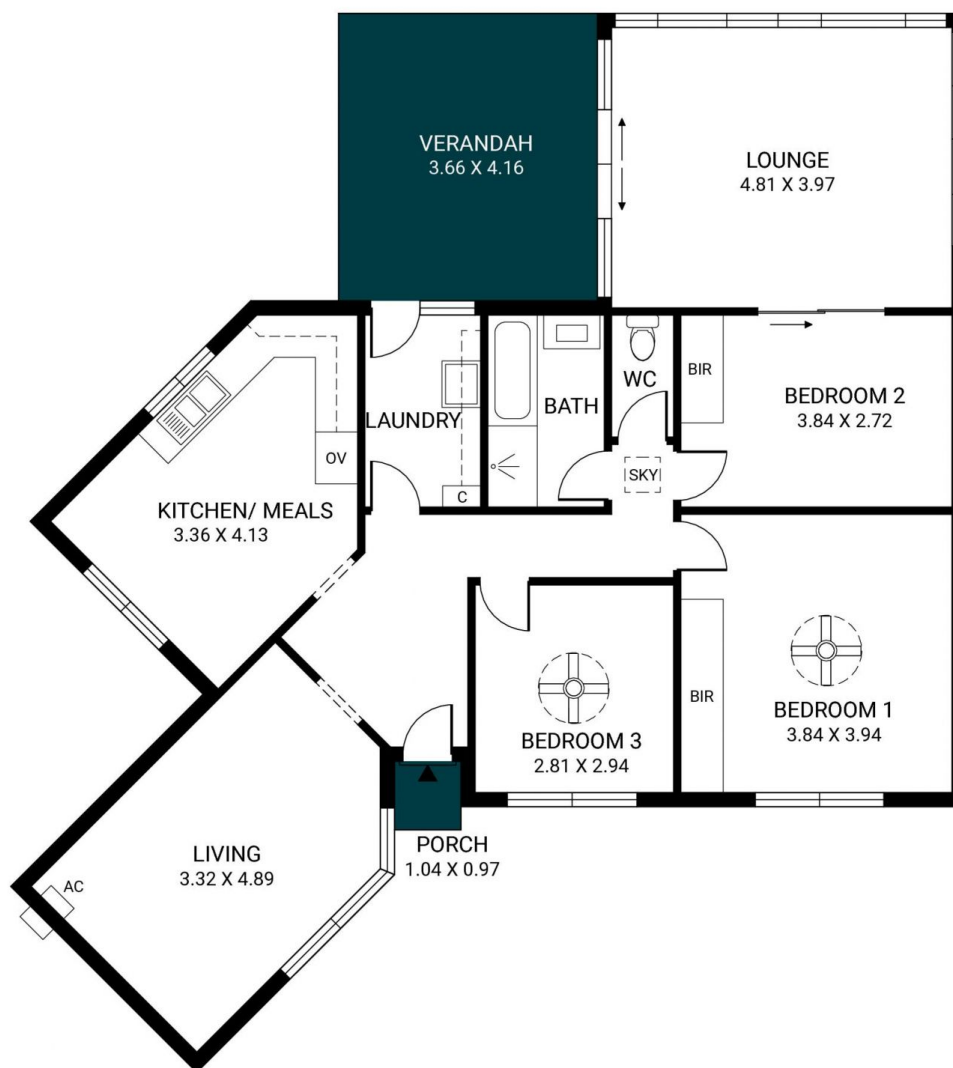
Robbie Leigh
08 8366 2292



Levi Sakkas
08 8366 2292

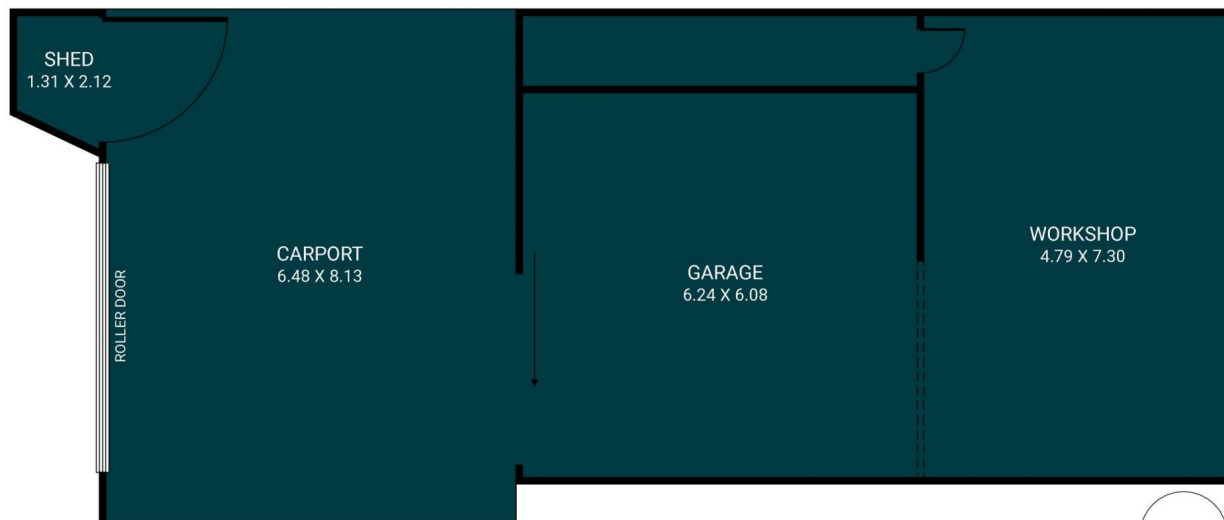
<https://www.magain.com.au>
Magain Real Estate

52 Hillier Road Morphett Vale SA
08 8366 2292



Scale in metres. This drawing is for illustration purposes only. All measurements are approximate and details intended to be relied upon should be independently verified.

Produced by **The Fotobase Group**



RWT

RWT

