

MAGAIN



4 Albert Street Clarence Park SA

FOR LEASE - Functional Office/Warehouse with Secure Parking

Located just off South Road, this recently refreshed property offers versatile office and warehouse accommodation in a highly accessible inner-south location. The property combines a architectural brick façade with practical design, delivering excellent flexibility for a wide range of occupiers.

Property Highlights:

- Approx. 422 sqm of combined office and warehouse space
- Light-filled office spaces to the front with partitioned and open-plan layouts

[For full version visit the website](https://www.magain.com.au/property/4-albert-street-clarence-park-sa/8456395)

Type	: Industrial
Price	: Contact Agent
Building Size	: 422 sqm
Land Size	: 508 sqm
View	: https://www.magain.com.au/property/4-albert-street-clarence-park-sa/8456395



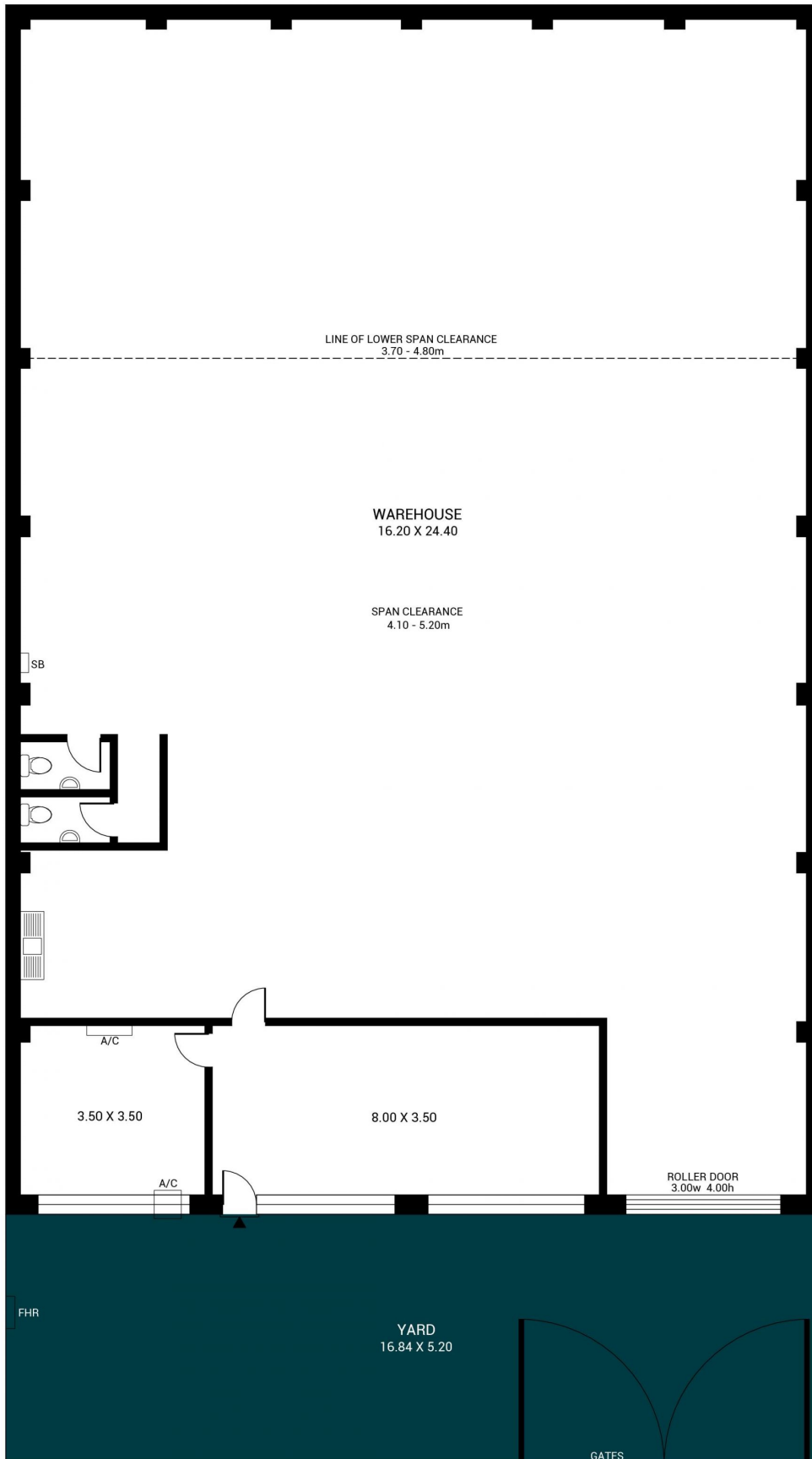
Alex Radda
0411 206 279



Tahlia De Leonardis
0405 568 078

<https://www.magain.com.au>
Magain Real Estate

Shop 1/1 Mitchell Street Hyde Park SA
08 8151 2356



422m²
TOTAL

422m²
Warehouse/
Amenities

