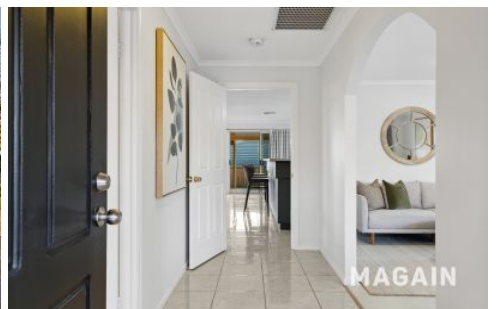


# MAGAIN



## 16 Hazeltine Drive Seaford Rise SA

4 2 2

Positioned in a quiet corner of Seaford Rise, this home on a corner block is immaculately presented and ready for its new owner. Designed with practicality and ease in mind, it's an ideal choice for families, downsizers, or anyone looking for a property that ticks all the right boxes.

This location is exceptional. Super quiet in the rear of this popular suburb while offering convenient proximity to stunning beaches and wineries. Close to public transport routes, quality schools, shops and medical facilities while just 40 minutes via the Southern Expressway to the Adelaide CBD.

Step inside and you're welcomed by a wide entry hallway that flows through to a spacious front formal lounge and

[For full version visit the website](https://www.magain.com.au/property/16-hazeltine-drive-seaford-rise-sa/8457101)

**Type** : House  
**Price** : \$849k - \$899k  
**Building Size** : 192 sqm  
**Land Size** : 596 sqm  
**View** : <https://www.magain.com.au/property/16-hazeltine-drive-seaford-rise-sa/8457101>



**David Hams**  
08 8366 2230



**Mitch Portlock**  
08 8366 2230

<https://www.magain.com.au>  
Magain Real Estate

Shop 60, Seaford Central Shopping Centre, Commercial Road  
08 8366 2230



Scale in metres. This drawing is for illustration purposes only. All measurements are approximate and details intended to be relied upon should be independently verified.

Produced by **The Fotobase Group**