




# MAGAIN

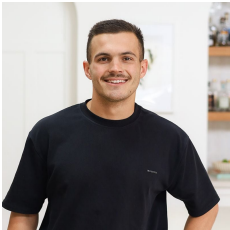
## 26 Hutchinson Road Gawler East SA

4  2  2 

Step into elegance and sophistication with this stunning two-storey residence, perfectly positioned in the much sought-after Gawler East precinct.

**Type** : House  
**Price** : \$1.25m-\$1.35m  
**Building Size** : 308 sqm  
**Land Size** : 1100 sqm  
**View** : <https://www.magain.com.au/property/26-hutchinson-road-gawler-east-sa/8473668>

Residing on an expansive 1080sqm allotment approximately, from the moment you arrive at this Regent built home welcomes you, the magnificently manicured gardens and impeccable façade set the tone for what lies beyond-luxury living at its finest.



**Bailey Fielke**  
08 8522 2715



**Grant Fielke**  
08 8522 2715

[For full version visit the website](https://www.magain.com.au)

<https://www.magain.com.au>  
Magain Real Estate

32 Adelaide Road Gawler South SA  
08 8522 2715

