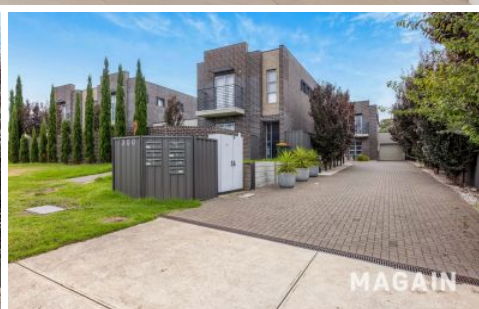


MAGAIN



4/300 Main South Road Morphett Vale SA

3  2  1 

Please contact Craig Thomson from Magain Real Estate for all your property advice.

Situated in a prime pocket of Morphett Vale, 4/300 Main South Road offers the perfect combination of style, comfort, and convenience - all within easy walking distance to shops, public transport, schools, and local amenities.

This Modern three-bedroom, two-bathroom home is brimming with natural light, featuring high ceilings, modern finishes, and a clever multi-level design that creates both space and privacy.

At the heart of the home is the designer kitchen, complete

[For full version visit the website](#)

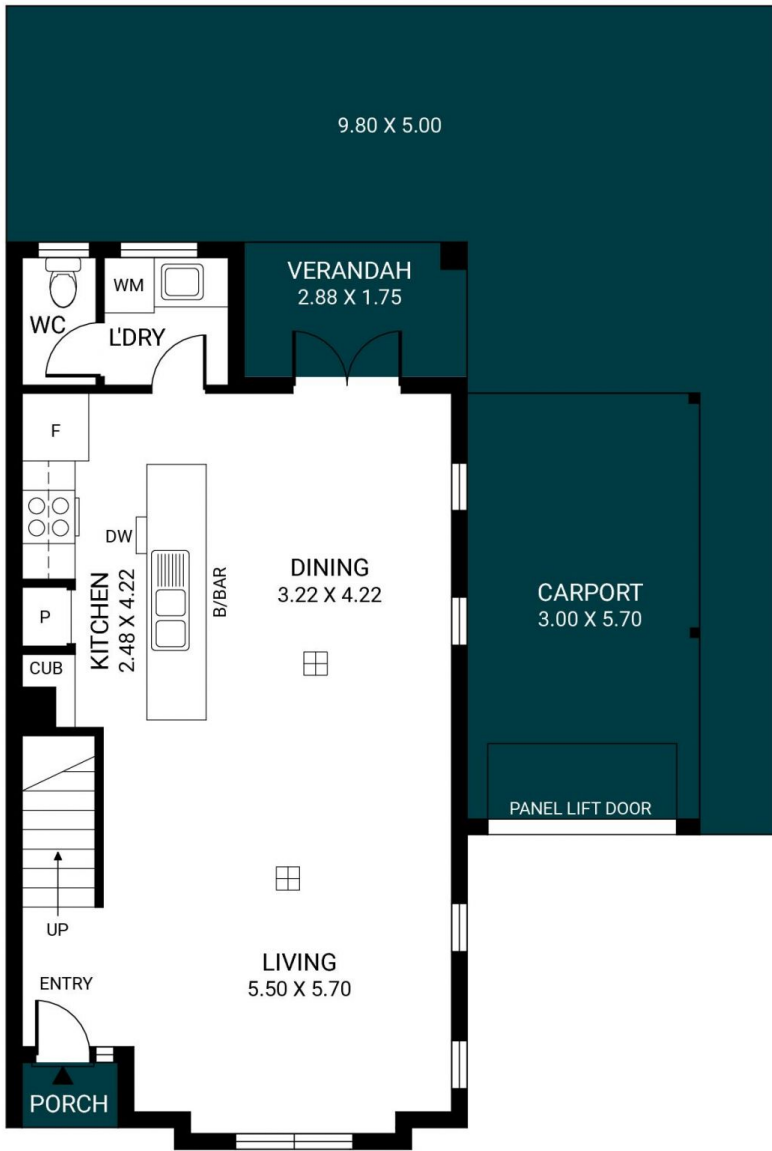
Type : Unit
Price : \$ 695,000
Building Size : 125 sqm
Land Size : 164 sqm
View : <https://www.magain.com.au/property/4300-main-south-road-morphett-vale-sa/8499231>



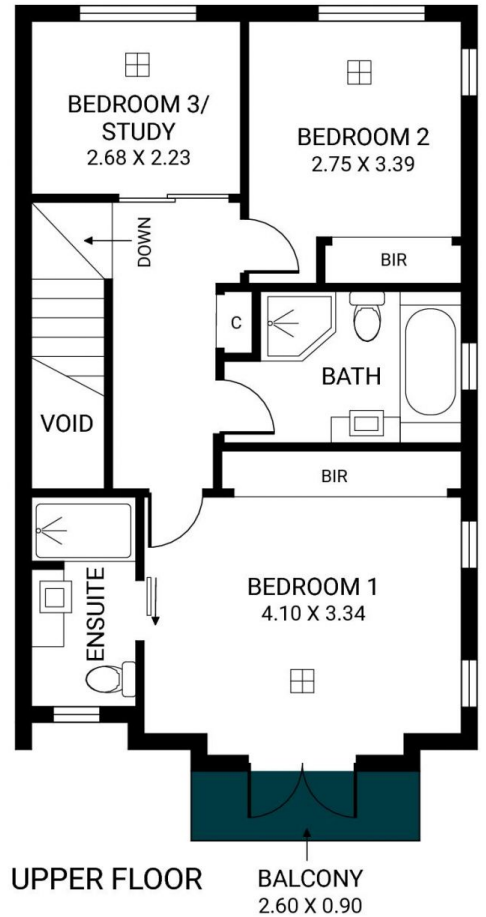
Craig Thomson
08 8366 2292

<https://www.magain.com.au>
Magain Real Estate

52 Hillier Road Morphett Vale SA
08 8366 2292



GROUND FLOOR



UPPER FLOOR



Scale in metres. This drawing is for illustration purposes only. All measurements are approximate and details intended to be relied upon should be independently verified.

Produced by **The Fotobase Group**