

MAGAIN



28 Cobalt Place Aldinga Beach SA

4 🛏 2 🚿 1 🚗

Please contact Jemma Turner or Jacqui Wehrmann from Magain Real Estate for all your property advice.

Tucked away in a quiet pocket of the sought-after Bayswood Estate, this beautifully presented home delivers the perfect blend of coastal charm and family-friendly living. With stunning views over the Aldinga Conservation Park and an easy walk to the beach, 28 Cobalt Place offers a peaceful lifestyle where nature and comfort come together.

From the moment you arrive, you'll appreciate the thoughtful layout and relaxed coastal atmosphere. Set on a corner allotment of approximately 426sqm, the home's two-storey design makes the most of its surroundings from open-plan living upstairs to a private outdoor oasis below.

[For full version visit the website](https://www.magain.com.au/property/28-cobalt-place-aldinga-beach-sa/8534073)

Type : House
Price : \$ 1,010,000
Building Size : 259 sqm
Land Size : 426 sqm
View : <https://www.magain.com.au/property/28-cobalt-place-aldinga-beach-sa/8534073>



Jemma Turner
08 8366 2230



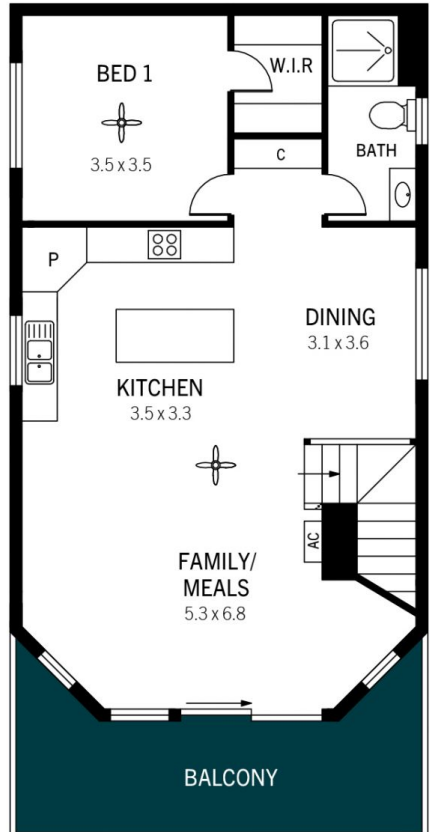
Jacqui Wehrmann
08 8366 2230

<https://www.magain.com.au>
Magain Real Estate

PO Box 18 Aldinga Beach SA
08 8366 2230



LOWER LEVEL



UPPER LEVEL

28 Cobalt Place, Aldinga Beach

DISCLAIMER: Floorplan and area calculation are approximate and for illustration purposes only.

MAGAIN Produced by Property Portraits

| | | |
|--------------|-------------------|-------------------------|
| Interior | 155m ² | 259m² |
| Exterior | 66m ² | |
| Shed | 15m ² | |
| Carpport | 23m ² | |
| TOTAL | | |