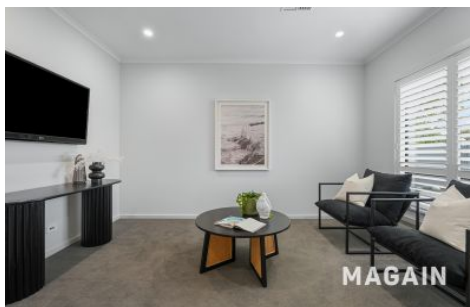


MAGAIN



42 Stopford Road Hove SA

4 2 2

Maximising every inch of its 352sqm allotment, this impeccably executed residence delivers a masterclass in modern design - where timeless style, intelligent planning and effortless liveability come together in perfect harmony.

Constructed with a durable steel frame in 2019, the home presents as new. Behind the fully automated front fence, a wide, welcoming frontage provides secure off-street parking for multiple vehicles - ideal for caravans, trailers, boats or family cars.

Beyond the security door, warm timber floors and abundant natural light set a sophisticated tone. To the right, a versatile second living room offers flexibility for an extra bedroom or relaxation, while to the left, the serene master

Type : House
Building Size : 178 sqm
Land Size : 352 sqm
View : <https://www.magain.com.au/property/42-stopford-road-hove-sa/8544139>



Sandy Robinson
08 8398 1494

[For full version visit the website](https://www.magain.com.au)

<https://www.magain.com.au>
Magain Real Estate

T17, 525 Brighton Road Brighton SA
08 8398 1494



Internal (inc garage)	178	SQM
External	28	SQM
Total Approx	206	SQM



Scale In Metres. This Drawing Is For Illustration Purposes Only. All Measurements Are Approximate And Details Intended To Be Relied Upon Should Be Independently Verified. All Measurements Are Approximate.



Internal (inc garage)	178	SQM
External	28	SQM
Total Approx	206	SQM



Scale In Metres. This Drawing Is For Illustration Purposes Only. All Measurements Are Approximate And Details Intended To Be Relied Upon Should Be Independently Verified. All Measurements Are Approximate.