

MAGAIN



11/442 States Road Morphett Vale SA

3  2  2 

Please contact Sandy Robinson from Magain Real Estate for all your property advice.

Tucked quietly at the rear of this well-kept 2017 Metro-built community, this stylish and practical home combines modern comfort, thoughtful design, and a sense of tranquillity rarely found in such a convenient location.

Set back from the main road and surrounded by leafy outlooks, this residence enjoys peace and privacy while also benefiting from multiple guest parking spaces - just one of the many perks of its enviable position. The timeless red-brick façade creates an inviting first impression, and that same warm, homely feel continues the moment you step inside.

[For full version visit the website](https://www.magain.com.au/property/11-442-states-road-morphett-vale-sa/8546695)

Type : House
Price : \$ 800,500
Building Size : 140 sqm
Land Size : 301 sqm
View : <https://www.magain.com.au/property/11-442-states-road-morphett-vale-sa/8546695>



Sandy Robinson
08 8398 1494

<https://www.magain.com.au>
Magain Real Estate

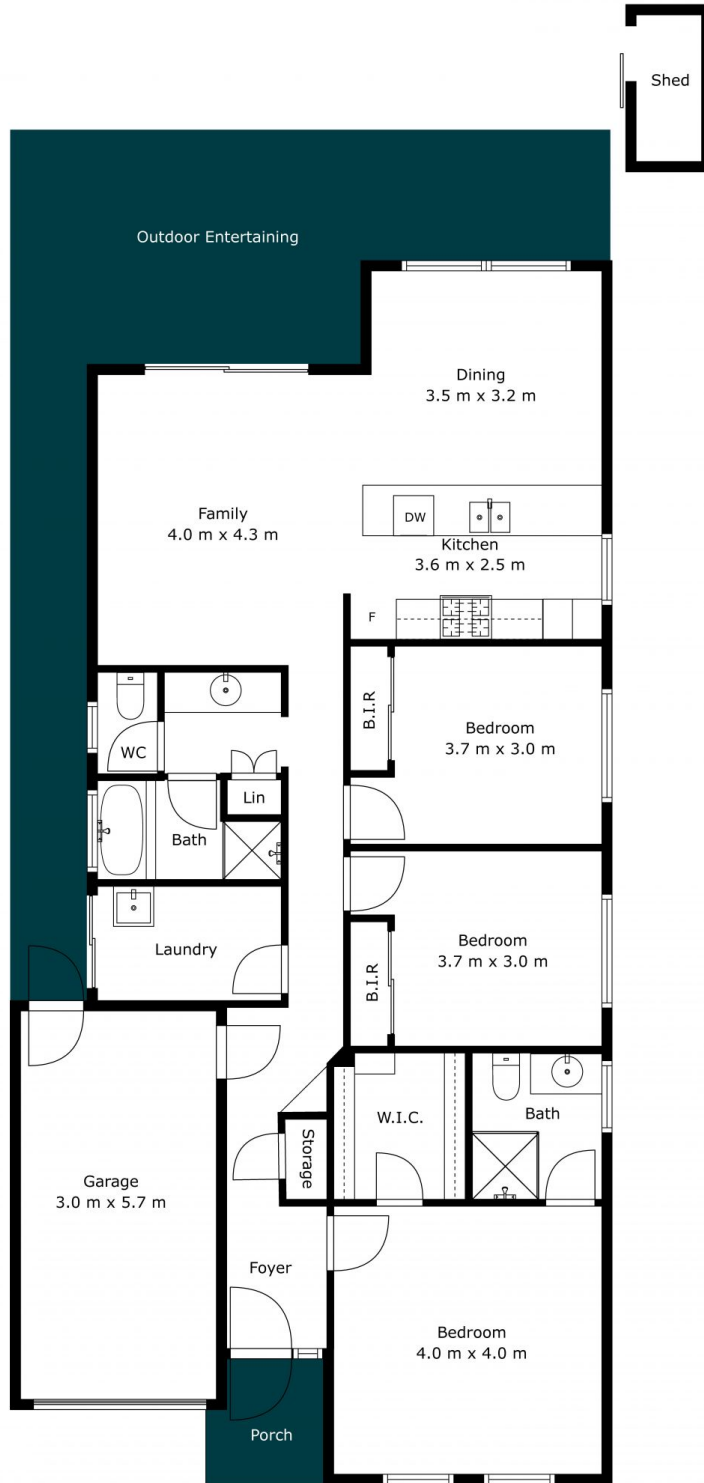
T17, 525 Brighton Road Brighton SA
08 8398 1494



Internal (inc garage)	140	SQM
External	30	SQM
Total Approx	170	SQM



Scale In Metres. This Drawing Is For Illustration Purposes Only. All Measurements Are Approximate And Details Intended To Be Relied Upon Should Be Independently Verified. All Measurements Are Approximate.



Internal (inc garage)	140	SQM
External	30	SQM
Total Approx	170	SQM



Scale In Metres. This Drawing Is For Illustration Purposes Only. All Measurements Are Approximate And Details Intended To Be Relied Upon Should Be Independently Verified. All Measurements Are Approximate.