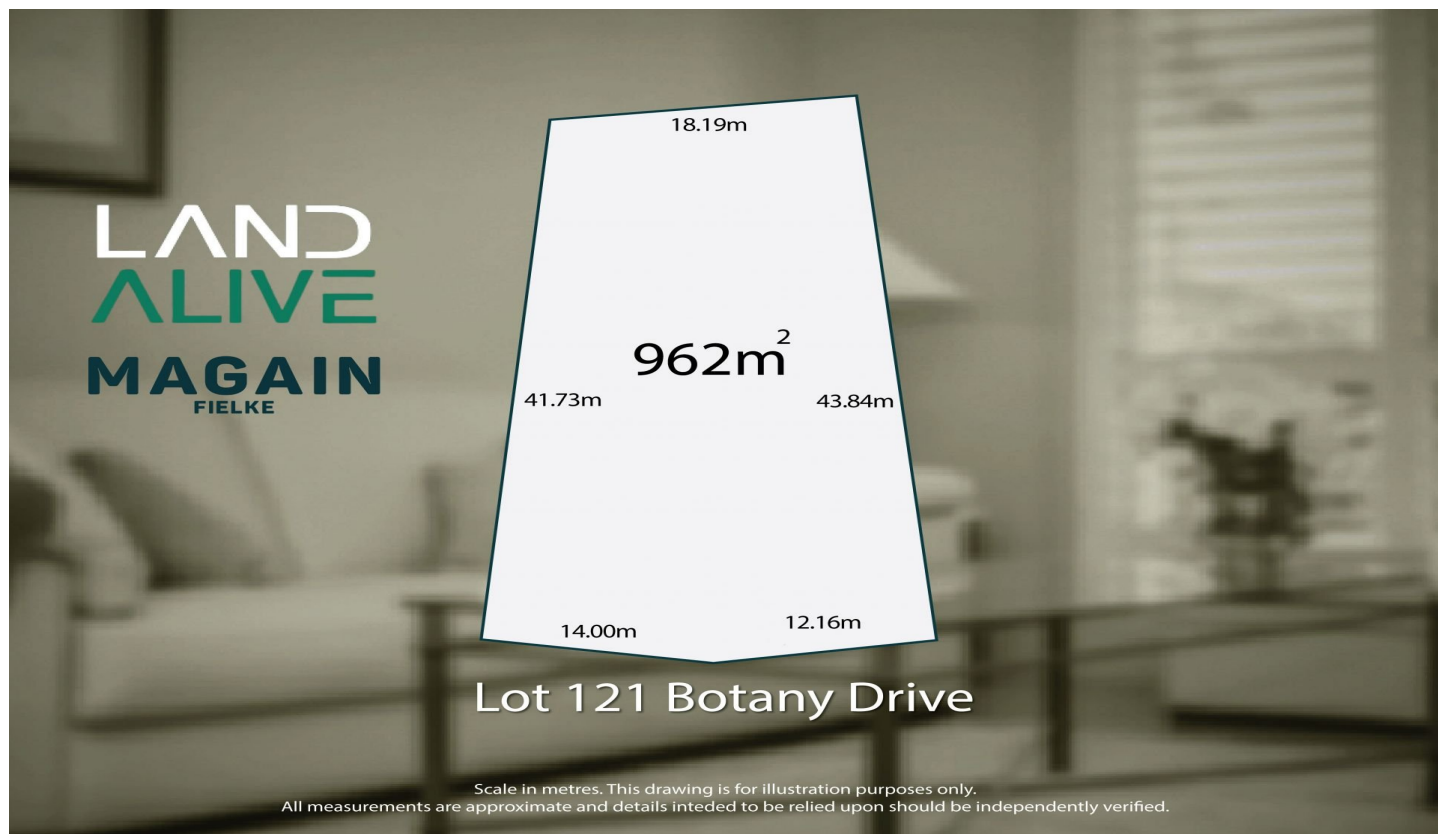


# MAGAIN



## 22 Botany Drive Angle Vale SA

Discover the perfect opportunity to build your dream home on this expansive 962m<sup>2</sup> allotment, ideally positioned in the highly sought-after Rivers Edge Estate, Angle Vale.

Nestled opposite serene reserve land, this premium block offers an idyllic outlook and exceptional space for a variety of home designs.

Rivers Edge Estate encapsulates the essence of country living without the distance. With its abundance of open spaces, lush natural surrounds, quality homes and a warm, family-focused community, it provides the perfect setting to reinvent your lifestyle.

Whether you're planning a spacious family home, outdoor entertaining areas or room for a pool and shed, this generous allotment delivers endless possibilities in one of Angle Vale's most desirable pockets.

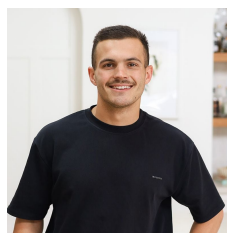
Key Features:

Large 962m<sup>2</sup> allotment

Reserve-facing position with tranquil views

[For full version visit the website](https://www.magain.com.au/property/22-botany-drive-angle-vale-sa/8552817)

**Type** : Land  
**Price** : \$595K  
**Land Size** : 962 sqm  
**View** : <https://www.magain.com.au/property/22-botany-drive-angle-vale-sa/8552817>



**Bailey Fielke**  
**08 8522 2715**



**Grant Fielke**  
**08 8522 2715**