

# MAGAIN



## 29 Anselm Street Christie Downs SA

This allotment of 322m<sup>2</sup> is ready for you to build your dream home. The block has a big 12.57m street frontage, and is in a fabulous spot, handy to arterial roads including the Southern Expressway and Main South Road for easy access to the city. Pre-levelled, retained and fenced for convenience this land is totally ready to be built on. Stormwater and sewer has been installed and connected.

A few minutes' drive will take you to all the local amenities you could ever need, including the fantastic Colonnades Shopping Centre. The beach is only a short distance away too, as are great options for schools and public transport.

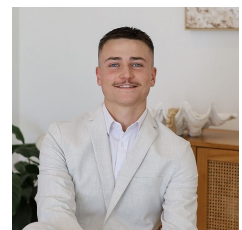
Take advantage of currently available Government grants!!

[For full version visit the website](https://www.magain.com.au)

<b>Type</b>	: Land
<b>Price</b>	: \$375k
<b>Land Size</b>	: 322 sqm
<b>View</b>	: <a href="https://www.magain.com.au/property/29-anselm-street-christie-downs-sa/8556339">https://www.magain.com.au/property/29-anselm-street-christie-downs-sa/8556339</a>



**Scott McPharlin**  
08 8382 0029



**Patrick Chay**  
08 8382 0029

<https://www.magain.com.au>  
Magain Real Estate

Shop 2, 32 Saltfleet Street Port Noarlunga SA  
08 8382 0029