

MAGAIN



19A Phillipps Street Somerton Park SA

4 3 2

Please contact Josh Morrison for more details or to register your interest..

19A - AVAILABLE
19 - AVAILABLE
19B - SOLD

Type : House
Price : \$2.175m - \$2.225m
Building Size : 294 sqm
View : <https://www.magain.com.au/property/19a-phillipps-street-somerton-park-sa/8562035>

Designed by D'Andrea Architects & built by renowned local builder TJE Built, this exceptional custom-built family home offers luxury and modern comforts with no expense being spared. With only a 2-minute walk straight down to the beach, this four-bedroom home represents the pinnacle of contemporary elegance from top to bottom and is designed to maximise functionality.

[For full version visit the website](https://www.magain.com.au)



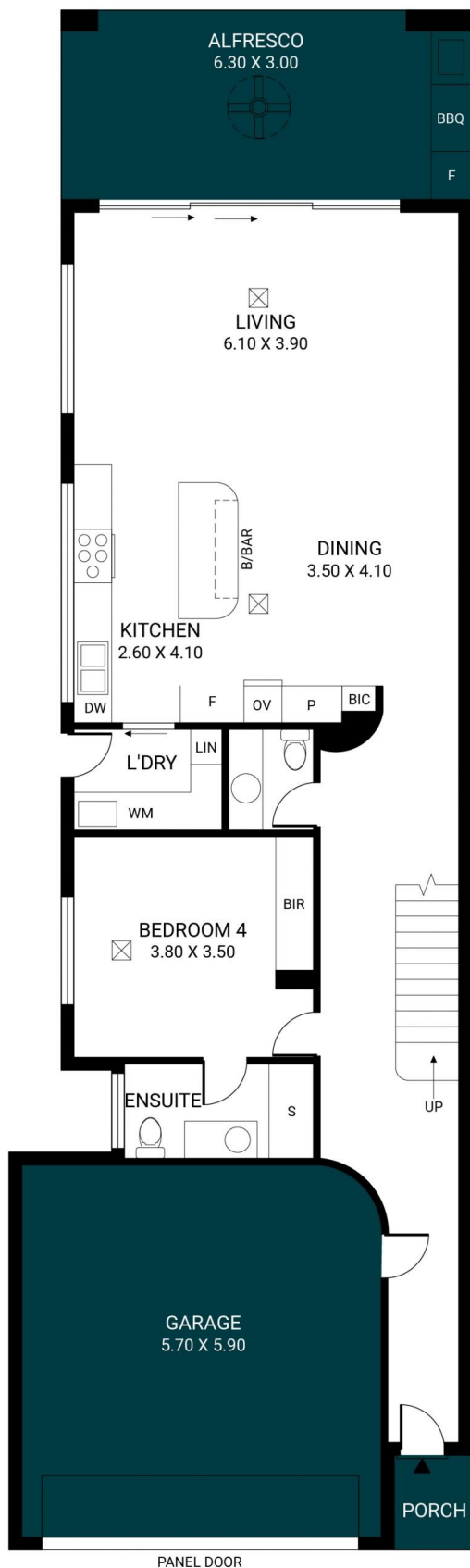
Josh Morrison
08 8294 4111



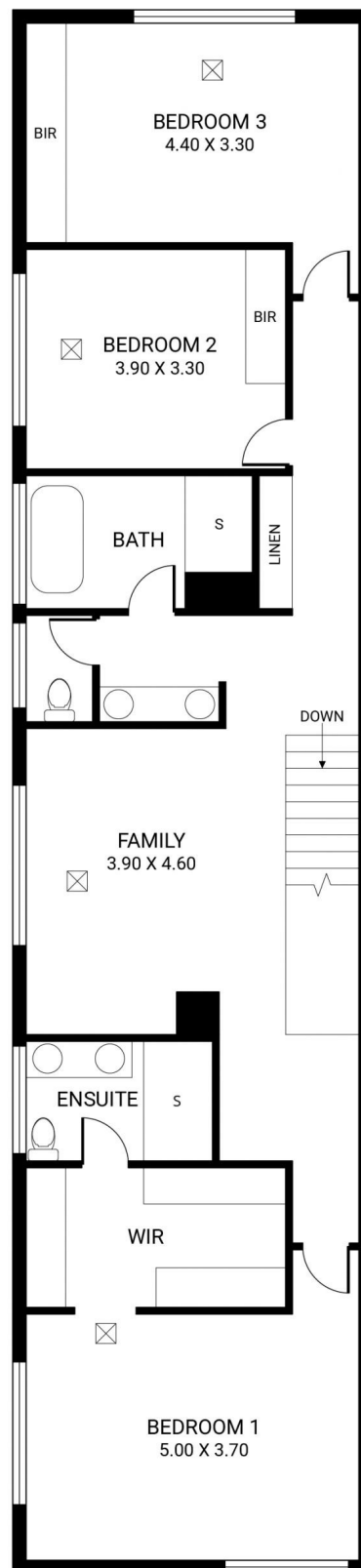
Steve Krause
08 8294 4111

<https://www.magain.com.au>
Magain Real Estate

74 Brighton Road Glenelg East SA
08 8294 4111



GROUND FLOOR



FIRST FLOOR

