

MAGAIN



2/3 Gray Street Brighton SA

2 1 2

Set in a peaceful pocket of Brighton, just behind the beautiful green spaces of Brighton Primary School and the local Rugby, Lacrosse and Football clubs, sits Unit 2/3 Gray Street. Labelled as a unit, yet part of an inactive, privately managed strata of only two properties, it feels far more like a standalone two-bedroom home.

The location is unbeatable-moments from the buzz of Jetty Road, Brighton Beach, shops and cafés-yet the real surprise is tucked behind the beautifully updated fence. Blessed with both a front and back yard, the home offers rare outdoor space for children, grandkids or four-legged friends. Enjoy your morning coffee in the eastern front garden and unwind with a glass of wine in the western-facing backyard. A brand-new deck sets the tone,

[For full version visit the website](https://www.magain.com.au/property/23-gray-street-brighton-sa/8565539)

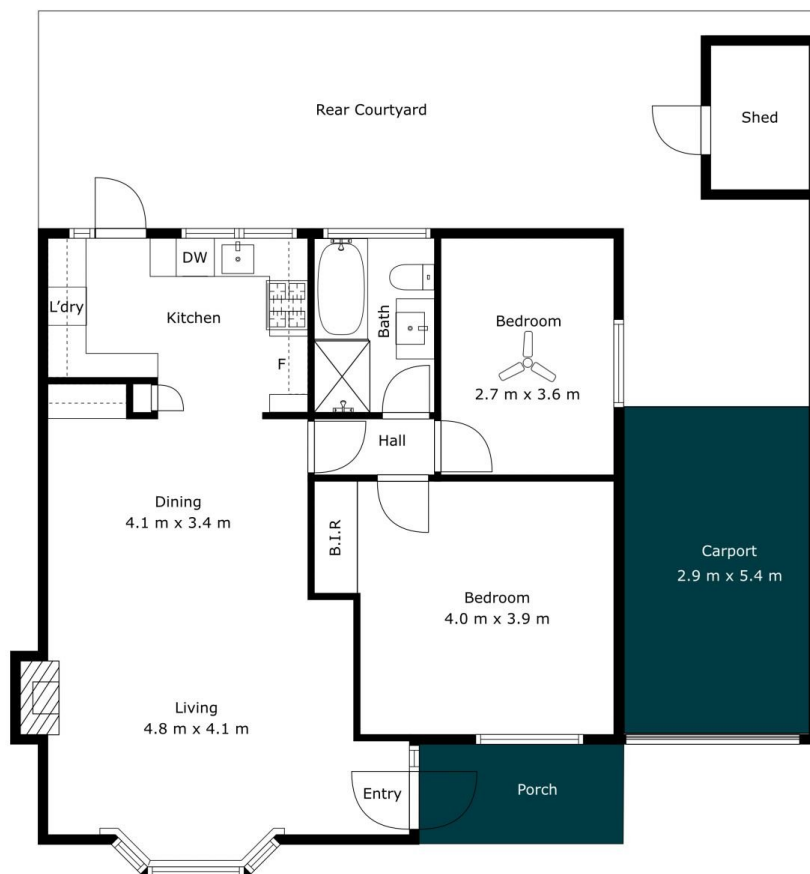
Type : Unit
Price : \$749k - \$799k
Building Size : 88 sqm
Land Size : 172 sqm
View : <https://www.magain.com.au/property/23-gray-street-brighton-sa/8565539>



Sandy Robinson
08 8398 1494

<https://www.magain.com.au>
Magain Real Estate

T17, 525 Brighton Road Brighton SA
08 8398 1494



Internal	88 SQM
External (inc carport)	24 SQM
Total Approx	112 SQM



Scale In Metres. This Drawing Is For Illustration Purposes Only. All Measurements Are Approximate And Details Intended To Be Relied Upon Should Be Independently Verified. All Measurements Are Approximate.



Internal	88 SQM
External (inc carport)	24 SQM
Total Approx	112 SQM



Scale In Metres. This Drawing Is For Illustration Purposes Only. All Measurements Are Approximate And Details Intended To Be Relied Upon Should Be Independently Verified. All Measurements Are Approximate.