

MAGAIN



52 Valley View Drive McLaren Vale SA

4 🛏 2 🚿 2 🚗

Please contact David Hams from Magain Real Estate for all your property advice.

A rare and tightly held offering, this immaculate two-storey residence sits in the very heart of McLaren Vale, showcasing sweeping views across the rolling hills and surrounding vineyards. Released to market for the first time in 38 years, the home exudes pride of ownership, quality craftsmanship, and an enviable lifestyle befitting one of the region's most admired locations.

The manicured front gardens set an impressive tone from the street. A single driveway leads to an undercover carport with auto roller door and direct access through to a generous shed/workshop, while the second driveway

[For full version visit the website](https://www.magain.com.au/property/52-valley-view-drive-mclaren-vale-sa/8568279)

Type : House
Price : \$ 1,400,000
Building Size : 290 sqm
Land Size : 1041 sqm
View : <https://www.magain.com.au/property/52-valley-view-drive-mclaren-vale-sa/8568279>



David Hams
08 8366 2230

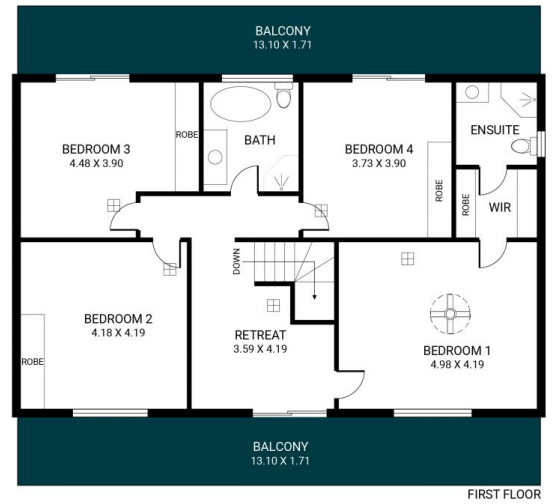
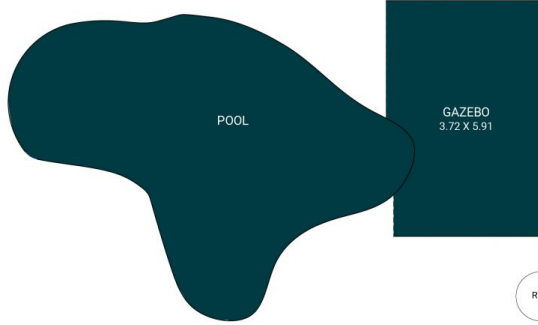


Mitch Portlock
08 8366 2230

<https://www.magain.com.au>
Magain Real Estate

Shop 60, Seaford Central Shopping Centre, Commercial Road
08 8366 2230

GARDEN SHED
(NOT IN POSITION)



Scale in metres. This drawing is for illustration purposes only. All measurements are approximate and details intended to be relied upon should be independently verified.

Produced by The Fotobase Group