




# MAGAIN



**7 Woodland Rd Mitchell Park SA**

**3**  **1**  **2** 

Available Now!

Click 'Book an Inspection Time' (at the bottom) to see currently scheduled open inspection times. Please register for any open inspections you will be attending or register your interest so that we can advise of new times/unexpected changes\*

Features to love:

- A magnificent kitchen with a superb expanse of benchtop and cupboard space.
- Electric induction cooktop hob
- Self-cleaning under bench oven
- Stainless steel dishwasher,

**Type** : House

**Price** : \$ 650 per week

**View** : <https://www.magain.com.au/property/7-woodland-rd-mitchell-park-sa/8569841>

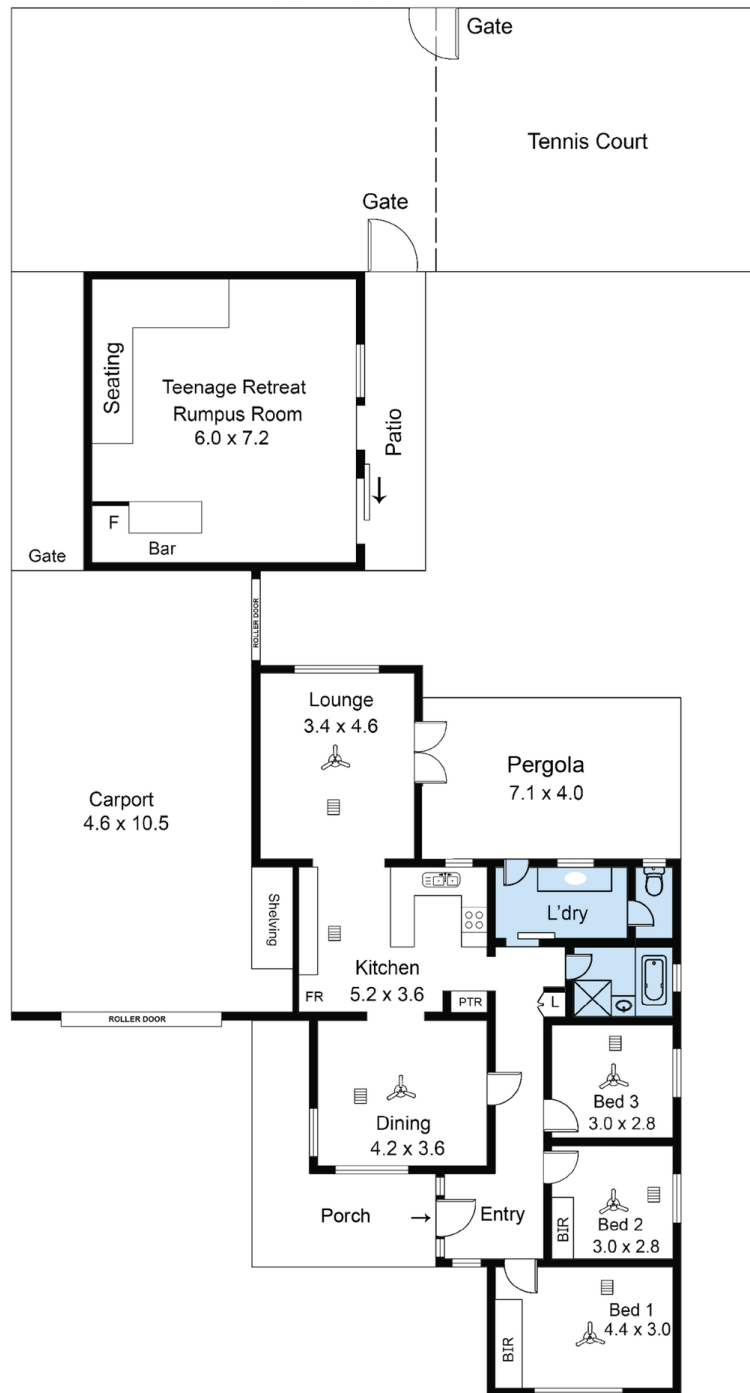


**Jenny Busbridge**  
**0422828867**

[For full version visit the website](https://www.magain.com.au)

<https://www.magain.com.au>  
Magain Real Estate

104 Payneham Road Stepney SA  
08 8212 5899



This drawing is for illustration purposes only. All measurements are approximate only and information to be relied upon should be independently verified. Leading Lines Photography.