

# MAGAIN



## 13 Abbott Avenue Morphett Vale SA

3 1 2

Please contact Craig Thomson from Magain Real Estate for all your property advice.

Perfectly positioned in a quiet pocket of Morphett Vale, this beautifully maintained three-bedroom home offers an exceptional lifestyle package-complete with multiple living areas, a sparkling in-ground pool and generous outdoor entertaining. Set on a 610m<sup>2</sup> allotment, this is a home that delivers comfort, convenience and value for families, first-home buyers and investors alike.

Inside, the home features two inviting living zones, including a light-filled front lounge and a spacious rear living room with cosy fireplace, exposed brick character and large windows that overlook the backyard. The central

[For full version visit the website](https://www.magain.com.au/property/13-abbott-avenue-morphett-vale-sa/8571565)

**Type** : House  
**Price** : \$ 850,000  
**Building Size** : 136 sqm  
**Land Size** : 610 sqm  
**View** : <https://www.magain.com.au/property/13-abbott-avenue-morphett-vale-sa/8571565>

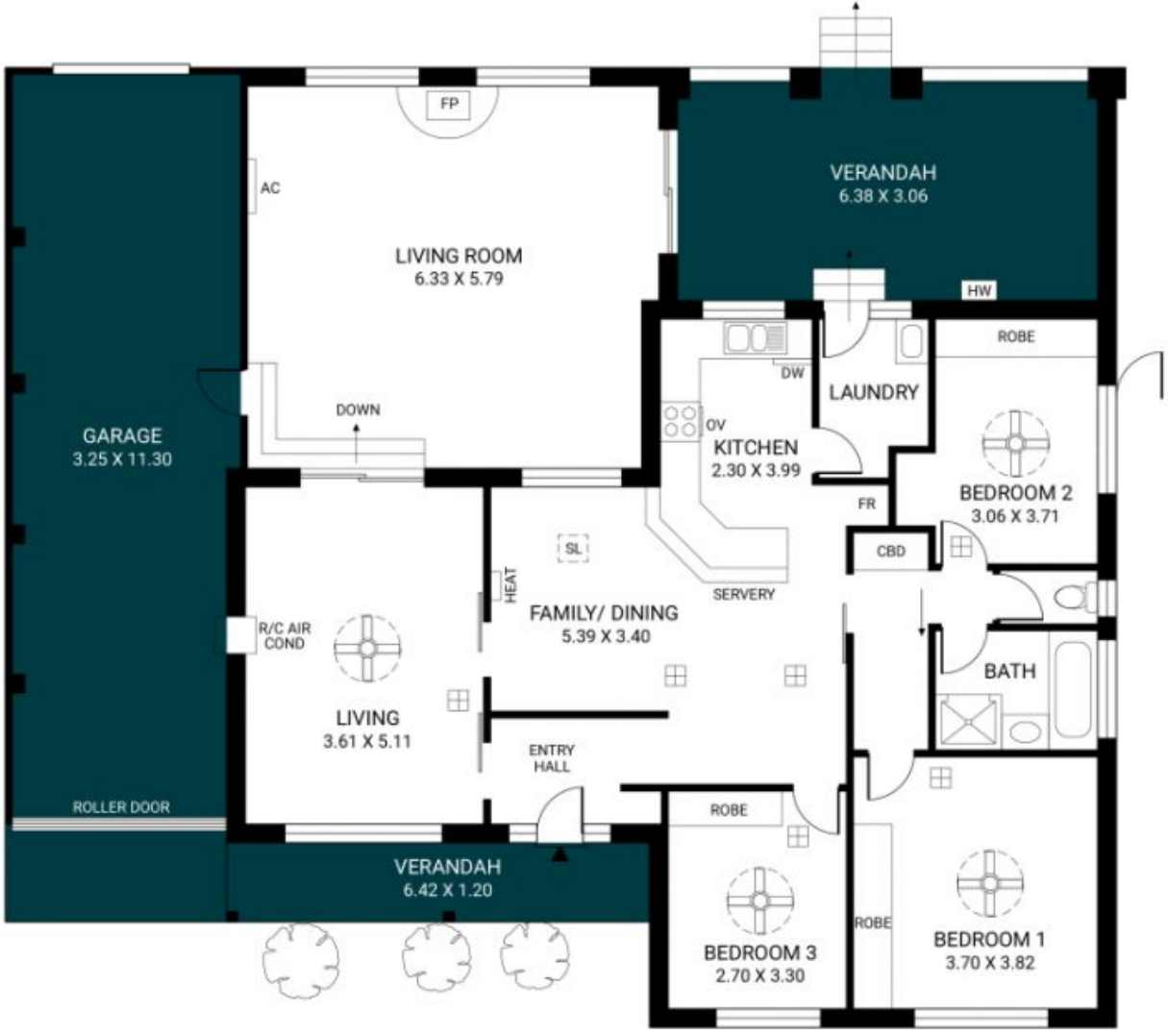


**Craig Thomson**  
08 8366 2292

<https://www.magain.com.au>  
Magain Real Estate

52 Hillier Road Morphett Vale SA  
08 8366 2292

PUMP  
SHED  
1.34 X 1.34



Scale in metres. This drawing is for illustration purposes only. All measurements are approximate and details intended to be relied upon should be independently verified.

Produced by The Fotobase Group



Scale in metres. This drawing is for illustration purposes only. All measurements are approximate and details intended to be relied upon should be independently verified.

Produced by **The Fotobase Group**