

MAGAIN



1/9 Simeon Crescent Morphett Vale SA

3 1 1

Set within a well kept community titled group, this stylish townhouse presents an appealing blend of comfort, convenience and low maintenance living-perfect for downsizers, first home buyers or investors.

Positioned just moments from Colonnades Shopping Centre and a wide range of local amenities, the location offers everyday ease with quick access to retail, transport and services.

Inside, the light filled ground floor showcases an open living and dining zone that connects seamlessly to the kitchen, creating a welcoming space for daily living and relaxed entertaining. The kitchen provides excellent storage and bench space, making it easy to prepare meals while

[For full version visit the website](https://www.magain.com.au/property/19-simeon-crescent-morphett-vale-sa/8571610)

Type : Townhouse
Price : \$649k - \$679k
Building Size : 120 sqm
Land Size : 155 sqm
View : <https://www.magain.com.au/property/19-simeon-crescent-morphett-vale-sa/8571610>



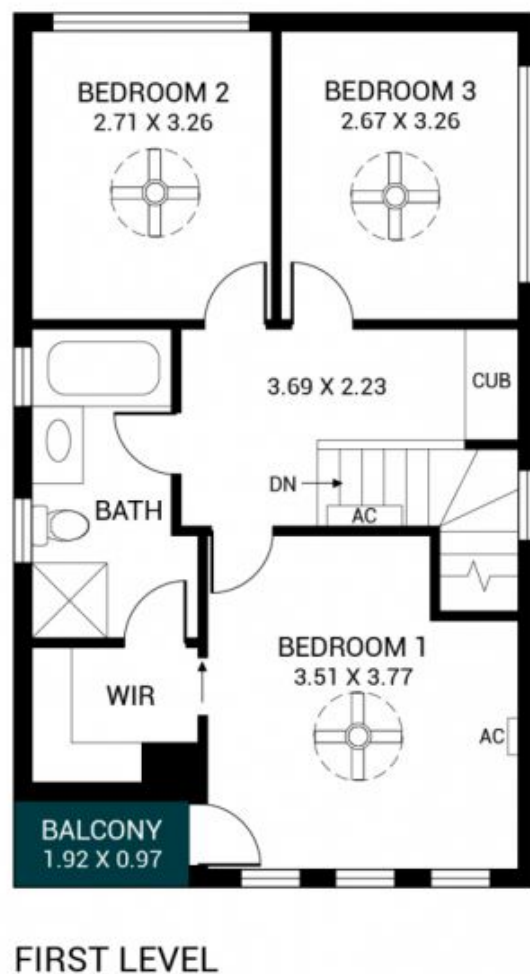
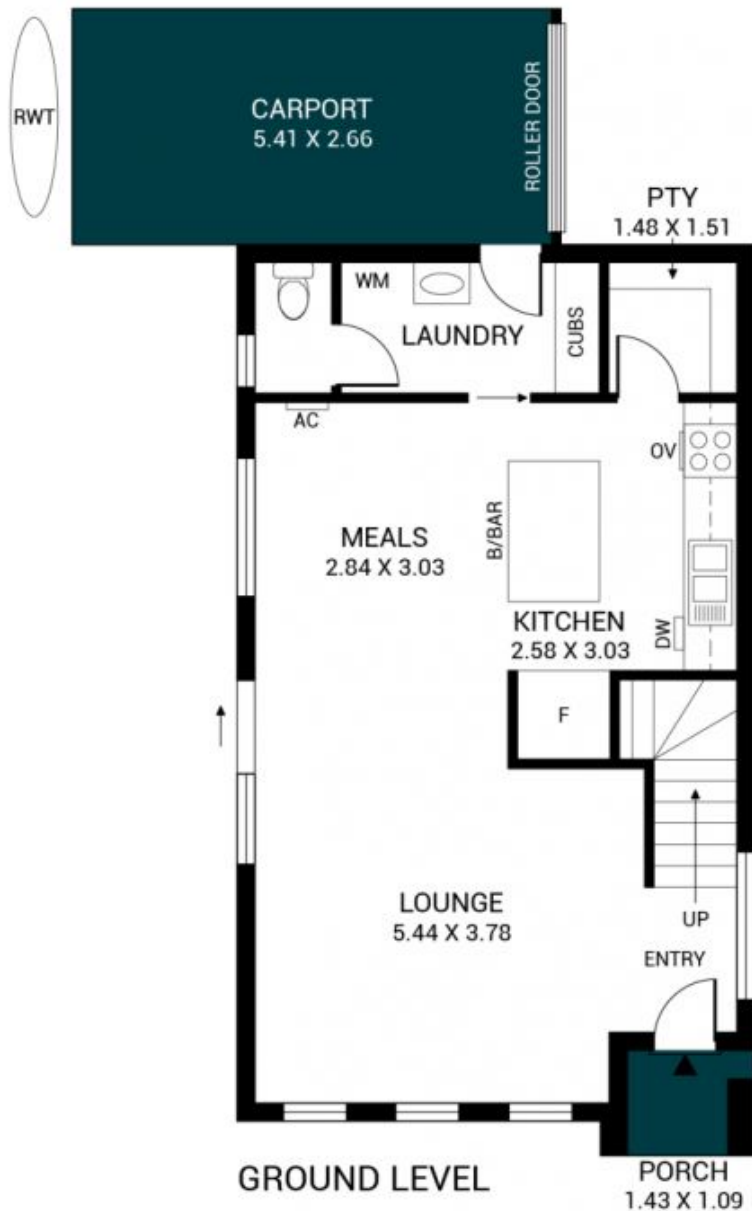
Zoe Ball
08 8381 6000



Sam Raven
08 8381 6000

<https://www.magain.com.au>
Magain Real Estate

Shop 15, Woodcroft Market Plaza, 217 Pimpala Road W
08 8381 6000



Scale in metres. This drawing is for illustration purposes only. All measurements are approximate and details intended to be relied upon should be independently verified.

Produced by **The Fotobase Group**