

MAGAIN



8 Lisa Martin Court Gawler East SA

3  2  3 

Please contact Grant Fielke or Bailey Fielke from Magain Real Estate for all your property advice.

Perfectly positioned in the ever-popular community of Gawler East, this beautifully presented 3 bedroom home offers modern comfort, effortless living, and an outstanding outdoor entertaining area designed for year-round enjoyment. With stylish updates, functional spaces, and a warm, welcoming feel throughout, this home is ideal for families, first-home buyers looking for quality in a fantastic location with sweeping views all the way to Port Adelaide!

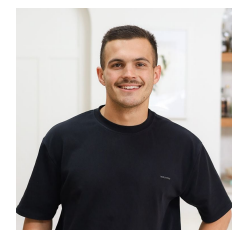
Stepping inside, you'll appreciate the thoughtful layout, light-filled living areas, and well-appointed kitchen. Outdoors, the impressive entertaining space creates the

[For full version visit the website](https://www.magain.com.au/property/8-lisa-martin-court-gawler-east-sa/8572749)

Type : House
Price : \$ 830,000
Land Size : 773 sqm
View : <https://www.magain.com.au/property/8-lisa-martin-court-gawler-east-sa/8572749>



Grant Fielke
08 8522 2715



Bailey Fielke
08 8522 2715

8 Lisa Martin Court,
GAWLER EAST



Living:	132.00SQM
Carport:	15.37SQM
Porch:	7.90SQM
Shed:	10.50SQM
Pergola:	34.49SQM

TOTAL: 200.26SQM

This drawing is for illustration purposes only. All measurements are internal and approximate. Details intended to be relied upon should be independently verified.

