

# MAGAIN

LAND  
ALIVE  
MAGAIN  
FIELKE

RIVERBANKS

12.50m  
450m<sup>2</sup>  
36.00m  
36.00m  
12.50m

Lot 21 Carmel Street

Scale in metres. This drawing is for illustration purposes only.  
All measurements are approximate and details intended to be relied upon should be independently verified.

## 21/ Carmel Street Angle Vale SA

A neighbourhood designed for balance, wellbeing and space to live your way. Enjoy expansive river views, grand gums, open landscapes and distant hill ranges, all thoughtfully planned to support a relaxed, connected lifestyle.

Perfect for growing families, downsizers or those seeking an end-of-day escape, Riverbanks delivers spacious living with modern convenience. Families will appreciate quality childcare and schooling options, including the new Angle Vale Super School nearby, plus Angle Vale Primary and Trinity College.

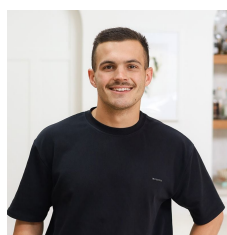
Everyday essentials and local favourites are just minutes away, with supermarkets, specialty stores, cafés, the Angle Vale Tavern and takeaway options close by. Spend weekends exploring the Barossa Valley only 25 minutes away or enjoy fresh local produce from Northern Adelaide's renowned food bowl. Major shopping centres and Bunnings are within just a short 15-minute drive.

At Riverbanks, you'll find room to live, play and relax - at every stage of life.

All floorplans, photos and text are for illustration purposes

[For full version visit the website](https://www.magain.com.au)

**Type** : Land  
**Price** : \$439,900  
**Land Size** : 450 sqm  
**View** : <https://www.magain.com.au/property/21-carmel-street-angle-vale-sa/8598201>



**Bailey Fielke**  
08 8522 2715



**Grant Fielke**  
08 8522 2715