

# MAGAIN



## 15 Mildara Close Woodcroft SA

3 1 2

Contact Mike Dobbin or Zoe Ball for inspection details.

Located in this dress circle pocket of Woodcroft amongst other quality homes, this bluestone fronted Villa offers a low maintenance yet spacious opportunity for busy couples, young families or downsizers looking for space, including caravan or boat parking. Situated just minutes to Woodcroft Primary School and the Woodcroft Plaza shopping centre, plus handy to transport.

The functional floor plan offers three bedrooms, master with robes & ensuite access to the two way bathroom, while bedroom 2 has robe provisions. Down the hallway is the formal lounge with hard wearing tiled floors, feature timber beam ceiling and gas heater. The tiled floors

**Type** : House  
**Price** : \$ 470,000  
**Building Size** : 129 sqm  
**Land Size** : 365 sqm  
**View** : <https://www.magain.com.au/property/15-mildara-close-woodcroft-sa/8599604>

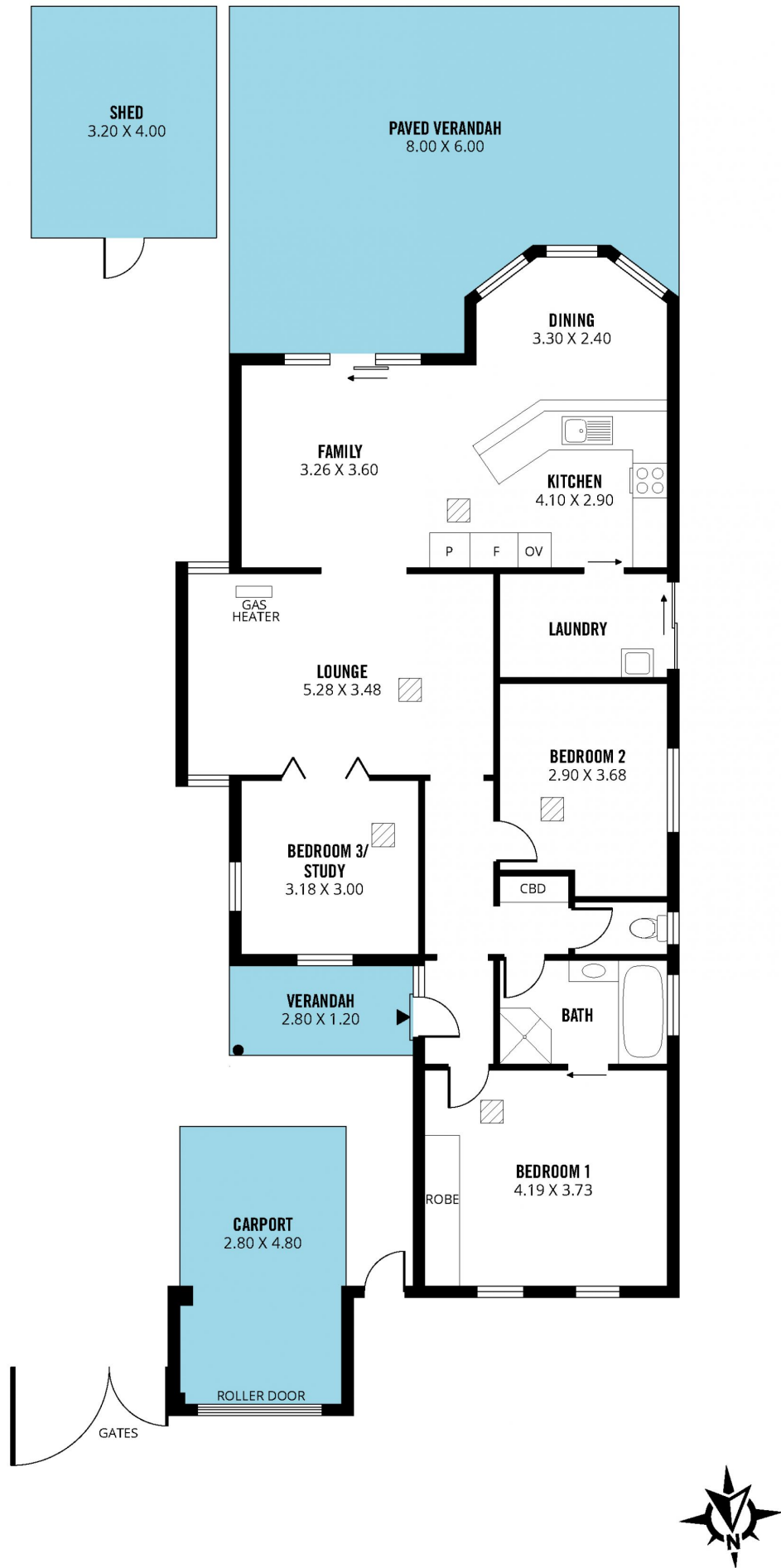
[For full version visit the website](#)



**Zoe Ball**  
08 8381 6000



**Nathan Brown**  
08 8398 1494



Scale in metres. This drawing is for illustration purposes only. All measurements are approximate and details intended to be relied upon should be independently verified. Produced by **The Fotobase Group**