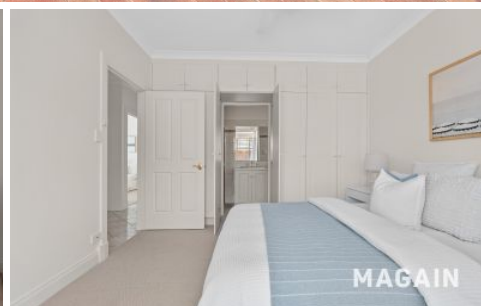
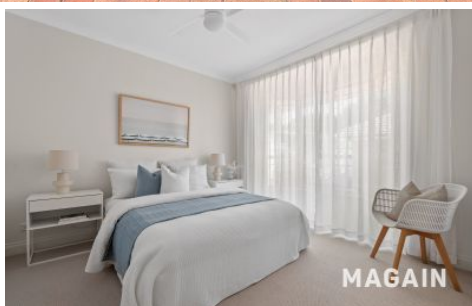


MAGAIN



2/15 Shoreham Road South Brighton SA

3 2 2

Perched and elevated at the rear of this tree-lined street, this inviting three-bedroom, two-bathroom residence delivers an exceptional blend of comfort, space and low-maintenance coastal living. Positioned on one of South Brighton's most desirable streets, it enjoys privacy, elevation and effortless access to everything that makes beachside living so appealing.

Strata titled yet presenting far more like a small house, you're welcomed by a charming front verandah and convenient guest parking. Entry is flexible, either through the front door or directly via the secure lock-up garage, immediately setting the tone for easy, practical living.

Step inside and you're greeted by an abundance of natural

[For full version visit the website](#)

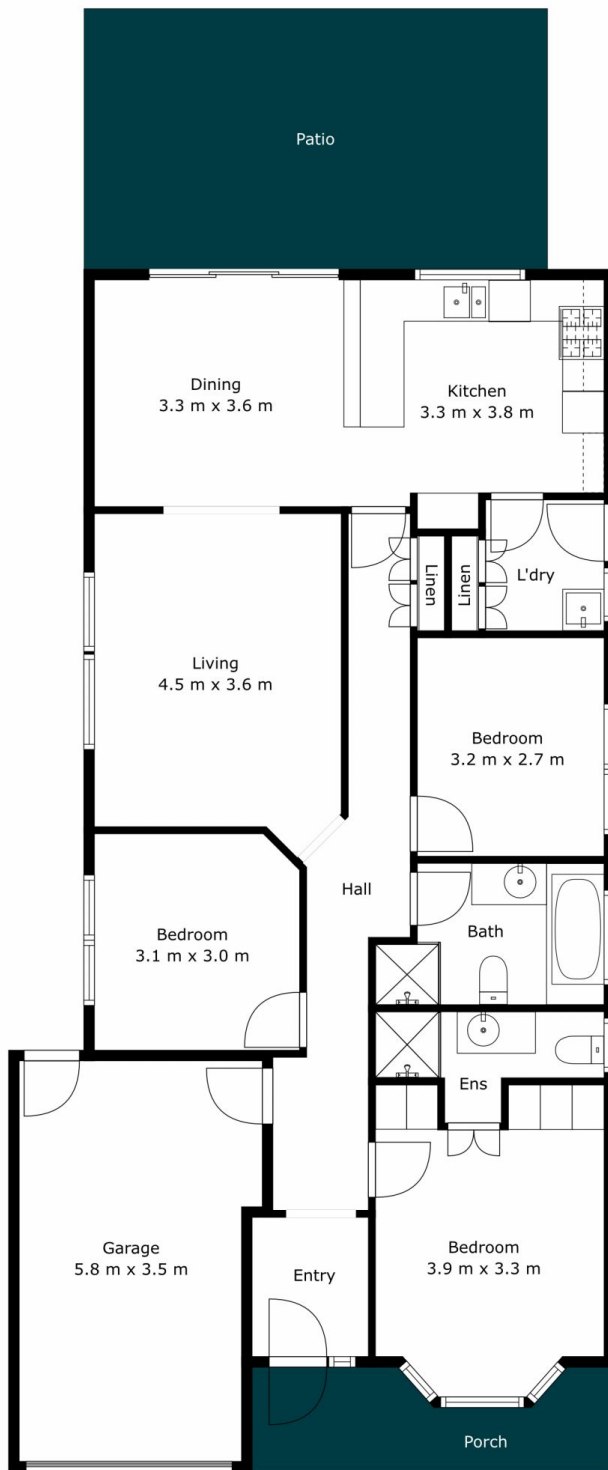
Type : House
Price : Offers Close Tuesday 10/2 (USP)
Building Size : 134 sqm
Land Size : 202 sqm
View : <https://www.magain.com.au/property/21-5-shoreham-road-south-brighton-sa/860-3366>



Sandy Robinson
08 8398 1494

<https://www.magain.com.au>
Magain Real Estate

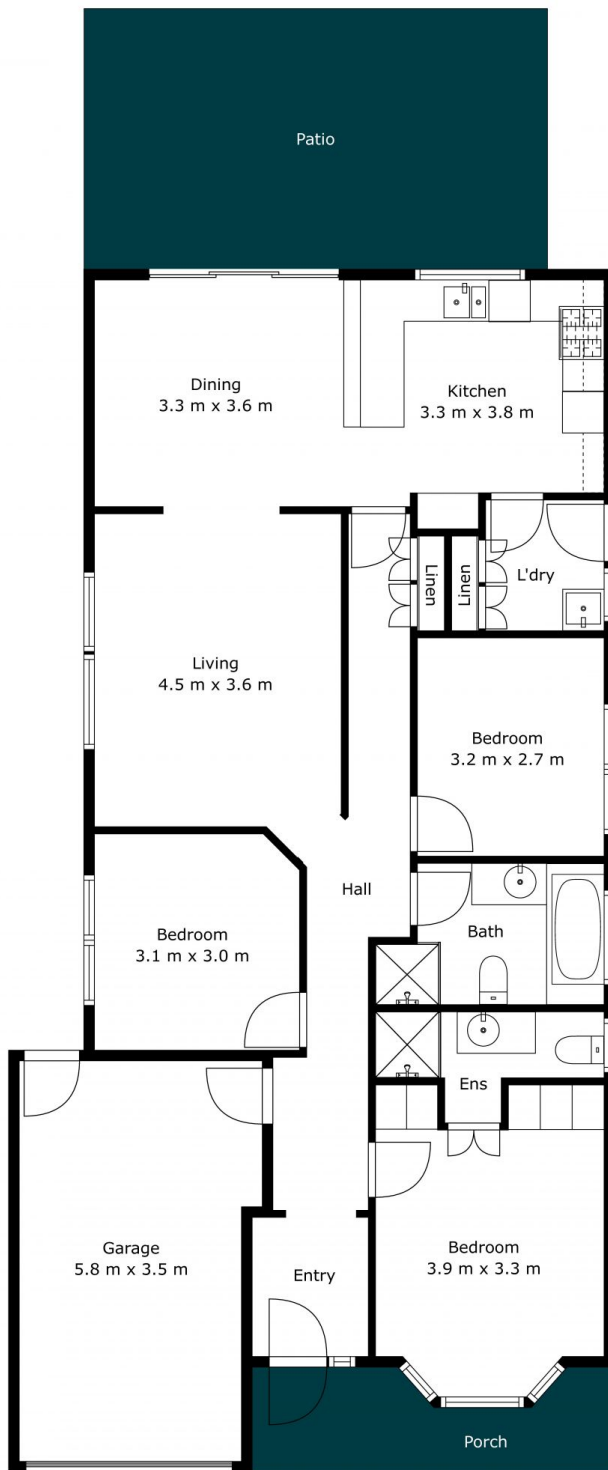
T17, 525 Brighton Road Brighton SA
08 8398 1494



Internal (inc garage)	134	SQM
External	40	SQM
Total Approx	174	SQM



Scale In Metres. This Drawing Is For Illustration Purposes Only. All Measurements Are Approximate And Details Intended To Be Relied Upon Should Be Independently Verified. All Measurements Are Approximate.



Internal (inc garage)	134	SQM
External	40	SQM
Total Approx	174	SQM



Scale In Metres. This Drawing Is For Illustration Purposes Only. All Measurements Are Approximate And Details Intended To Be Relied Upon Should Be Independently Verified. All Measurements Are Approximate.