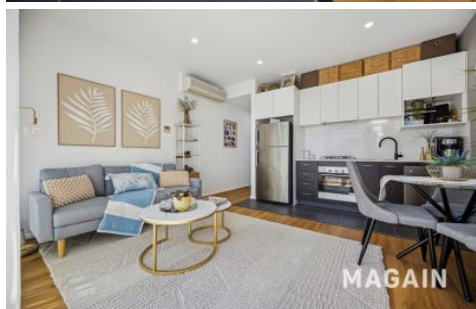


MAGAIN



401/12-14 Wirra Drive New Port SA

1 1 1

Stephen Keenihan is delighted to present this stunning top-floor apartment, perfectly positioned just moments from Port Creek in the serene community of New Port. Whether you're a first-time buyer, downsizer, couple, investor, or seeking a lock-up-and-leave lifestyle, this low-maintenance home offers exceptional comfort and convenience.

Located within the well-maintained, secure complex of 'The Shores,' this residence grants exclusive access to fantastic amenities including a gym, swimming pool, spa, sauna, and more. Enjoy the ease of nearby shopping options, quick access to the Glanville railway line, West Lakes Shopping Centre, local restaurants, and The Port Plaza. Experience a lifestyle of relaxation, accessibility, and modern living with a short drive to Semaphore Beach.

[For full version visit the website](https://www.magain.com.au/property/4011214-wirra-drive-new-port-sa/8610229)

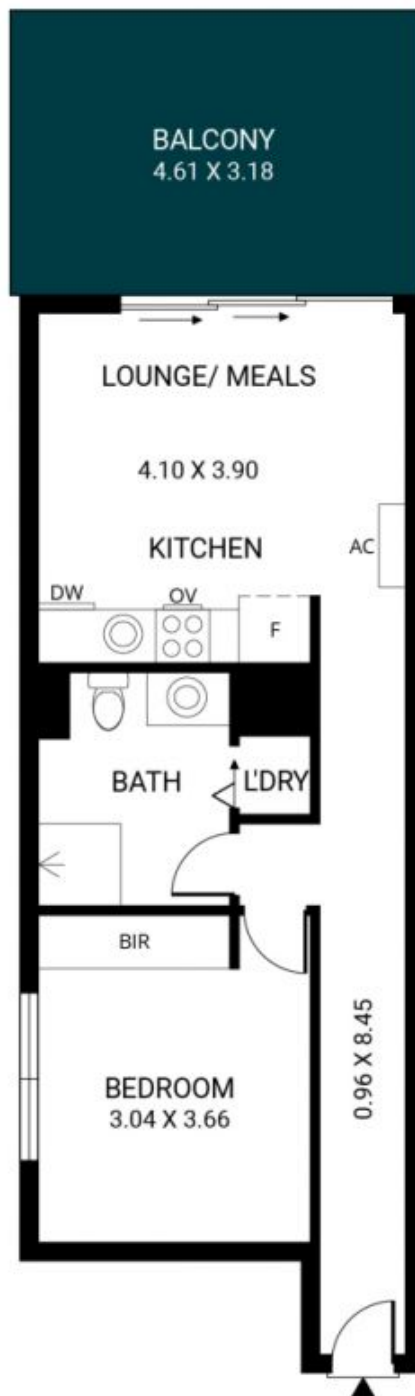
Type	: Apartment
Price	: \$492k - \$522k
Building Size	: 50 sqm
View	: https://www.magain.com.au/property/4011214-wirra-drive-new-port-sa/8610229



Stephen Keenihan
0415 408 208

<https://www.magain.com.au>
Magain Real Estate

104 Payneham Road Stepney SA
08 8212 5899



Scale in metres. This drawing is for illustration purposes only. All measurements are approximate and details intended to be relied upon should be independently verified. Produced by **The Fotobase Group**