




# MAGAIN



24/56 Whitmore Square Adelaide SA

2  1  1 

Click 'Book an Inspection Time' (at the bottom) to see currently scheduled open inspection times. Please register for any open inspections you will be attending or register your interest so that we can advise of new times/unexpected changes\*

**Type** : Apartment

**Price** : \$ 620 per week

**View** : <https://www.magain.com.au/property/2456-whitmore-square-adelaide-sa/8614759>

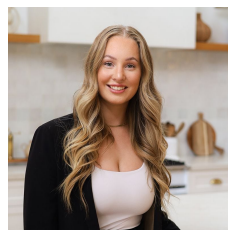
This 2-level architecturally designed apartment is all about a lifestyle!

You'll be close to the Central Markets, Gouger Street Restaurants and Cafe's, loads of iconic drinking holes and coffee shops.

Features you will love:

\* Public transport right at your door step

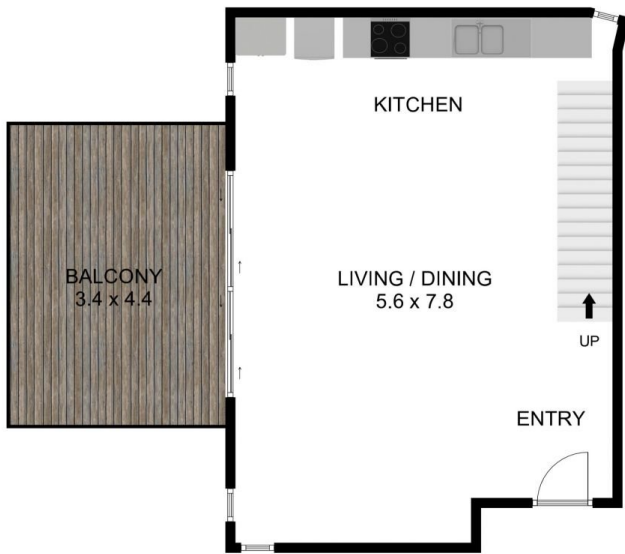
[For full version visit the website](#)



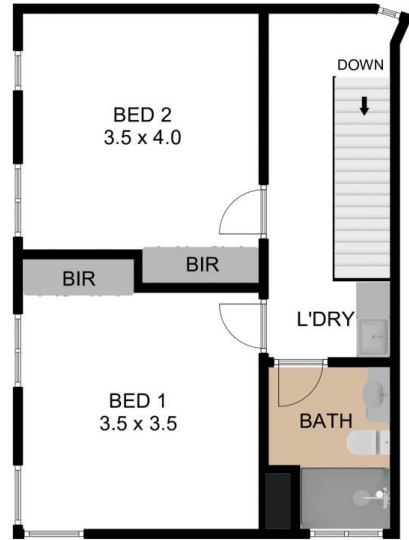
**Tanisha Szepessy**  
0409100615

<https://www.magain.com.au>  
Magain Real Estate

104 Payneham Road Stepney SA  
08 8212 5899



LOWER FLOOR



UPPER FLOOR

24/42-56 WHITMORE SQUARE, ADELAIDE SA 5000

**88.60 M<sup>2</sup>**  
INTERNAL LIVING

**15.00 M<sup>2</sup>**  
BALCONY

**103.60 M<sup>2</sup>**  
GRAND TOTAL

THE FLOOR PLAN IS FOR ILLUSTRATION PURPOSE ONLY. MEASUREMENTS ARE APPROXIMATE AND INTERNAL. NOT TO SCALE © BREP



24/42-56 WHITMORE SQUARE, ADELAIDE SA 5000

**88.60 M<sup>2</sup>**  
INTERNAL LIVING

**15.00 M<sup>2</sup>**  
BALCONY

**103.60 M<sup>2</sup>**  
GRAND TOTAL

THE FLOOR PLAN IS FOR ILLUSTRATION PURPOSE ONLY. MEASUREMENTS ARE APPROXIMATE AND INTERNAL. NOT TO SCALE © BREP