

# MAGAIN



## 18 Kuranya Way Morphett Vale SA

4  1  1 

Please contact Craig Thomson from Magain Real Estate for all your property advice.

Set in a quiet pocket of Morphett Vale, this well-kept home offers a super practical layout with multiple living zones, excellent outdoor entertaining, and flexible space for growing families, downsizers or investors.

Inside you'll find four bedrooms, a central living room, rumpus room and a separate dining area connecting neatly to the kitchen. Step outside and you'll love the huge full-length verandah - the perfect spot for BBQs, family get-togethers and year-round entertaining.

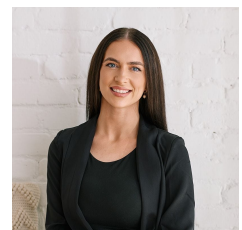
With secure carport parking ( including remote roller door),

[For full version visit the website](https://www.magain.com.au/property/18-kuranya-way-morphett-vale-sa/8617012)

**Type** : House  
**Land Size** : 665 sqm  
**View** : <https://www.magain.com.au/property/18-kuranya-way-morphett-vale-sa/8617012>



**Craig Thomson**  
08 8366 2292



**Brooke Wannan**  
08 8366 2292



Scale in metres. This drawing is for illustration purposes only. All measurements are approximate and details intended to be relied upon should be independently verified.

Produced by The Fotobase Group

