

# MAGAIN



14 Kathleen Street Dover Gardens SA

4  2  4 

Please contact Sandy Robinson from Magain Real Estate for all your property advice.

Architecturally considered and beautifully executed, this brand-new four-bedroom residence is defined by light, warmth and thoughtful design. A palette of soft neutrals, timber flooring, expansive glazing and curated finishes creates a home that feels calm, contemporary and effortlessly livable.

From the front porch, a wide central hallway introduces the home's sense of space and flow. To the front, a versatile study provides a quiet retreat ideal for working from home, positioned privately away from the main living areas.

[For full version visit the website](https://www.magain.com.au)

**Type** : House  
**Price** : \$ 1,312,000  
**Building Size** : 189 sqm  
**Land Size** : 406 sqm  
**View** : <https://www.magain.com.au/property/14-kathleen-street-dover-gardens-sa/8622698>

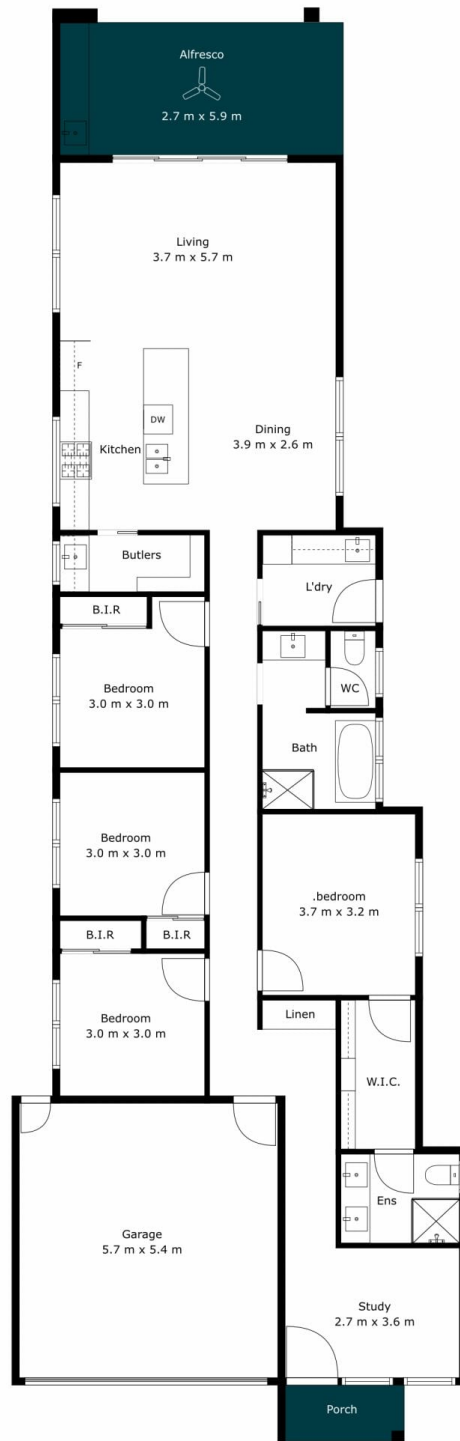


**Sandy Robinson**  
08 8398 1494

<https://www.magain.com.au>  
Magain Real Estate

T17, 525 Brighton Road Brighton SA  
08 8398 1494

R.W.T

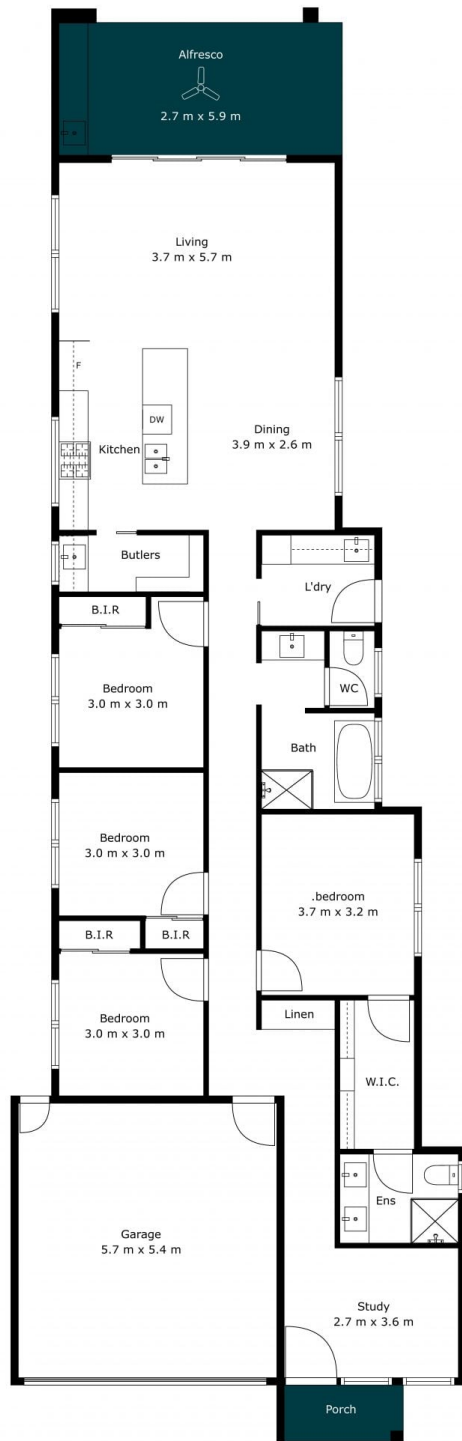


Internal (inc garage)	189	SQM
External	19	SQM
Total Approx	208	SQM



Scale In Metres. This Drawing Is For Illustration Purposes Only. All Measurements Are Approximate And Details Intended To Be Relied Upon Should Be Independently Verified. All Measurements Are Approximate.

R.W.T



Internal (inc. garage)	189	SQM
External	19	SQM
Total Approx	208	SQM



Scale In Metres. This Drawing Is For Illustration Purposes Only. All Measurements Are Approximate And Details Intended To Be Relied Upon Should Be Independently Verified. All Measurements Are Approximate.