

MAGAIN



5/8 Heysen Circuit Andrews Farm SA

Please contact Nishant Tomar for more details or to register your interest.




Positioned in a quiet pocket of Andrews Farm, this 2024 built detached house sits on approximately 292m² and delivers modern, low-maintenance living ideal for families, first home buyers and investors alike.

Set within the growing City of Playford, the property enjoys a peaceful street position while remaining conveniently close to everyday amenities, schools, parks and transport.

Why Buyers Will Love This Home

? 2024 built modern home with quality finishes

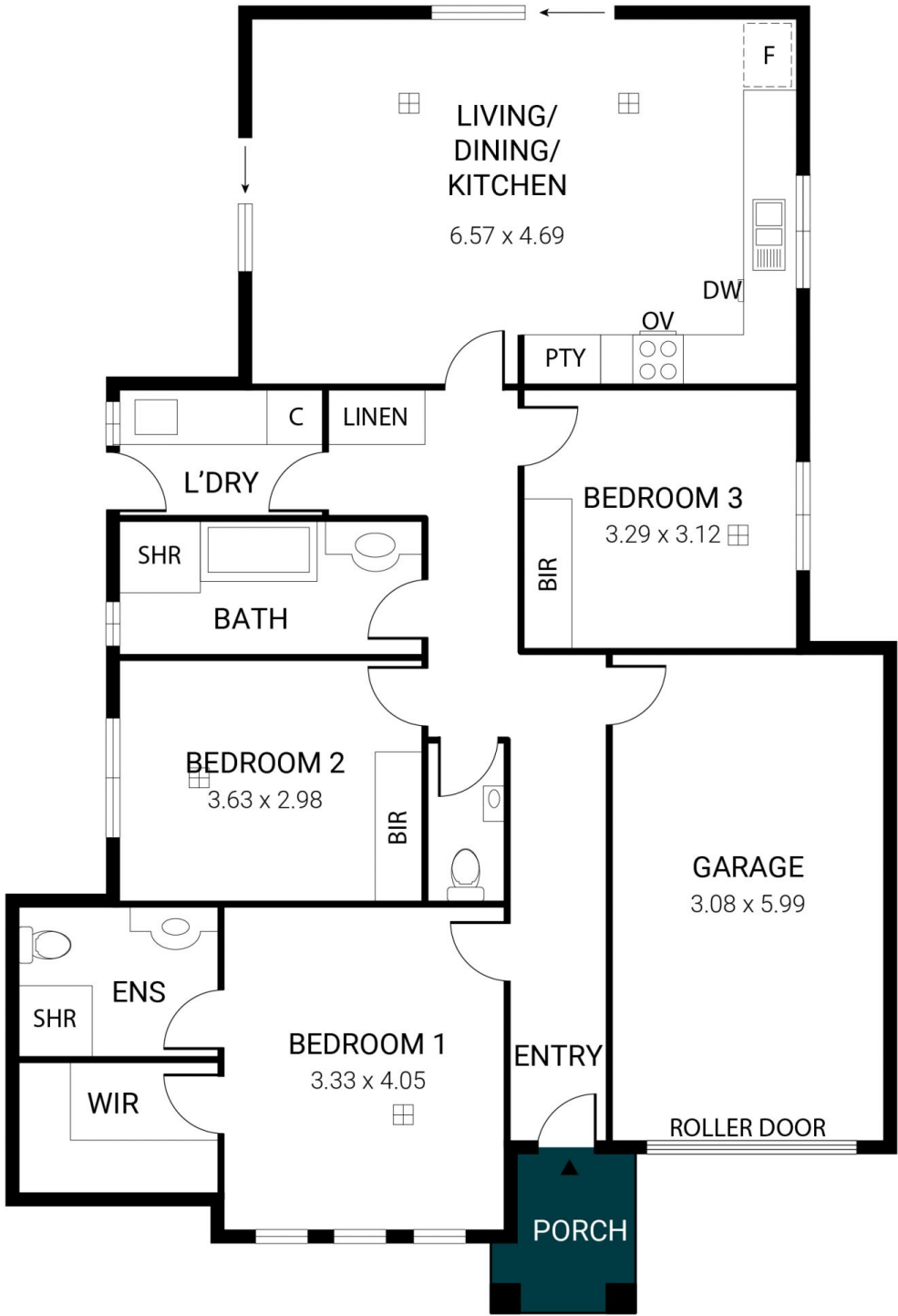
[For full version visit the website](https://www.magain.com.au/property/58-heysen-circuit-andrews-farm-sa/8623065)

3  2  1 

Type : House
Price : \$660k - \$720k
Land Size : 292 sqm
View : <https://www.magain.com.au/property/58-heysen-circuit-andrews-farm-sa/8623065>



Nishant Tomar
08 8381 6000



Scale in metres. This drawing is for illustration purposes only. All measurements are approximate and details intended to be relied upon should be independently verified.

Produced by **The Fotobase Group**