

# MAGAIN



## 39 Shepherd Avenue Goolwa South SA

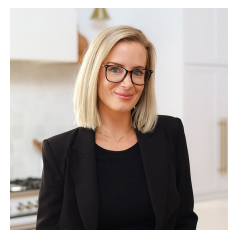
3 1 1

Please contact Lyndsay Hailstone from Magain Real Estate for all your property advice.

Set on a substantial 1,126m<sup>2</sup> (approx.) allotment, 39 Shepherd Avenue presents an exciting opportunity to renovate, rebuild or create the ultimate holiday escape in sought-after Goolwa South.

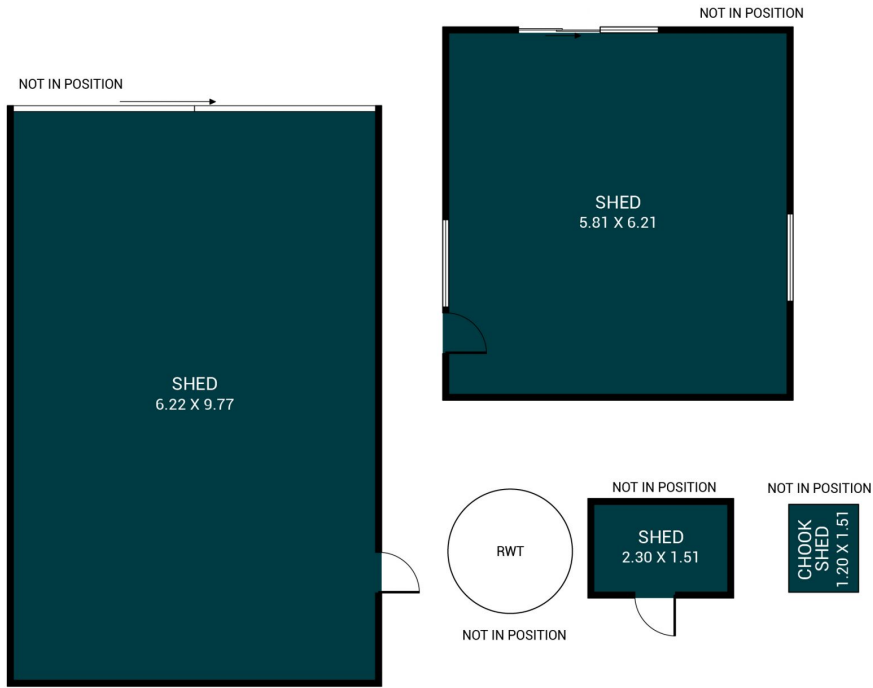
Built in 1976, the home offers two well-proportioned bedrooms with brand new carpets, plus a versatile third room that could easily function as a bedroom, study or home office. All bedrooms feature built-in robes for practical storage. There is one main bathroom, along with the added convenience of a second toilet.

**Type** : House  
**Price** : \$ 701,000  
**Land Size** : 1126 sqm  
**View** : <https://www.magain.com.au/property/39-shepherd-avenue-goolwa-south-sa/8623661>



**Lyndsay Hailstone**  
08 8366 2230

[For full version visit the website](https://www.magain.com.au)





Scale in metres. This drawing is for illustration purposes only. All measurements are approximate and details intended to be relied upon should be independently verified.

Produced by **The Fotobase Group**