

MAGAIN



2/2 Petersen Crescent Port Noarlunga SA

3 2 1

Located in the sought-after Port Noarlunga, this modern and bright townhouse delivers easy-care coastal living with an impressive layout throughout. Perfectly suited to first-home buyers, investors or downsizers, the home combines contemporary comfort with low-maintenance appeal.

The open-plan living and dining area is tiled for practicality and flows seamlessly to a private, easy-care courtyard-ideal for relaxed outdoor entertaining. A well-appointed kitchen with stone benchtops helps complete the home, while ducted heating and cooling ensures year-round comfort. Adding extra convenience is a bonus powder room on the lower level.

Type : House

Price : \$699K-\$729K

View : <https://www.magain.com.au/property/22-petersen-crescent-port-noarlunga-sa/8623829>

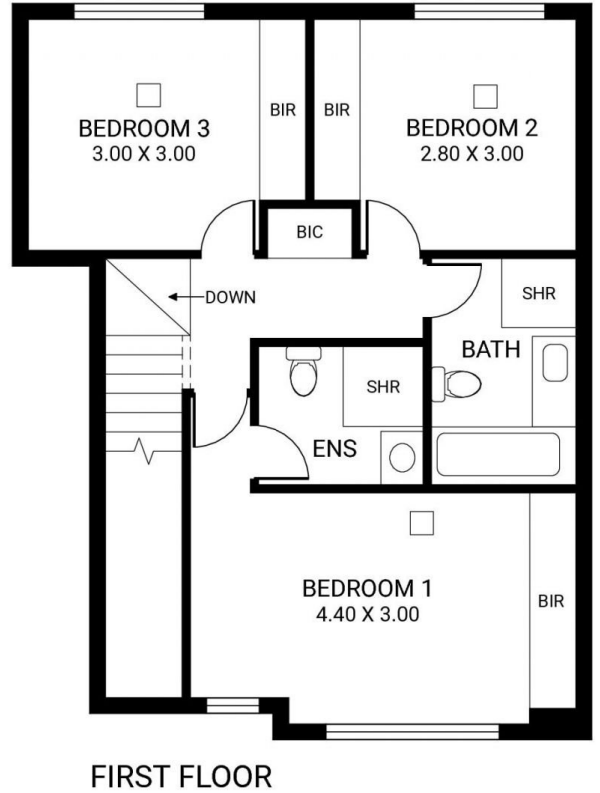
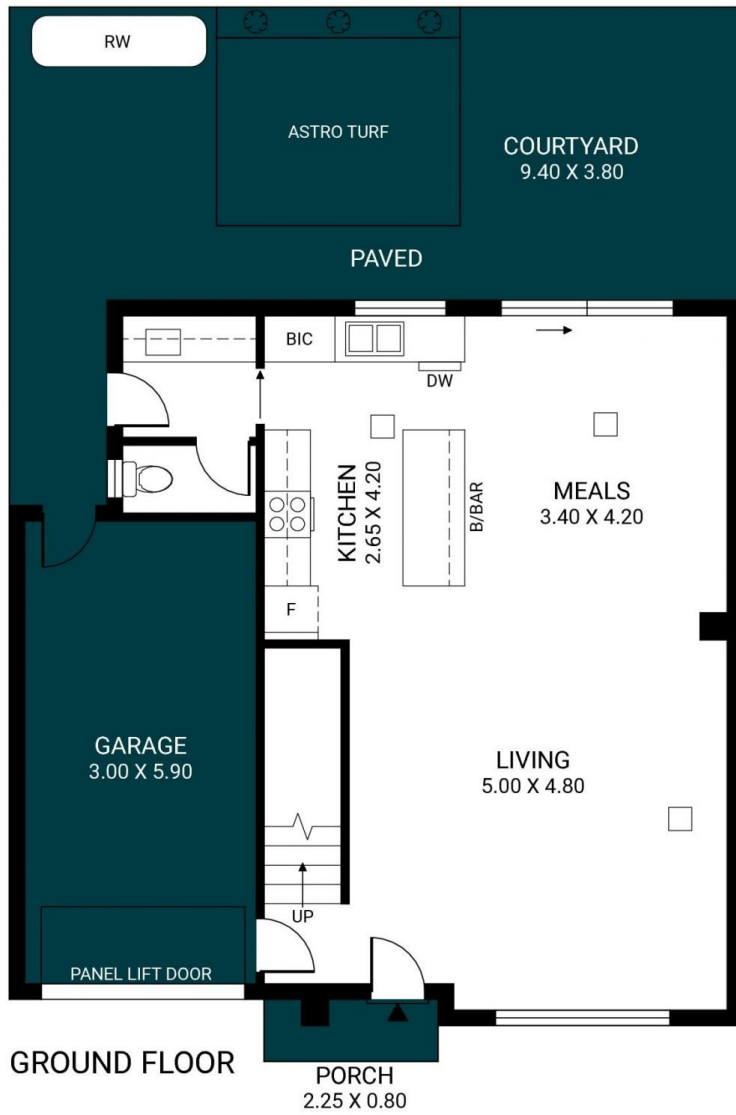


Steven Weinert
08 8382 0029

[For full version visit the website](https://www.magain.com.au)

<https://www.magain.com.au>
Magain Real Estate

Shop 2, 32 Saltfleet Street Port Noarlunga SA
08 8382 0029



Scale in metres. This drawing is for illustration purposes only. All measurements are approximate and details intended to be relied upon should be independently verified.

Produced by **The Fotobase Group**