

MAGAIN



28 The Terrace Gawler South SA

4 🛏 2 🚿 2 🚗

Please contact Grant Fielke or Bailey Fielke from Magain Real Estate for all your property advice.

Nestled in the highly sought-after 'Gawler Terrace' precinct of Gawler South, this beautifully presented four-bedroom family home offers space, comfort, and exceptional indoor-outdoor living perfect for growing families.

This impressive residence situated on approximately 1488sqm, combines formal and casual living zones with expansive outdoor entertaining and beautifully manicured gardens.

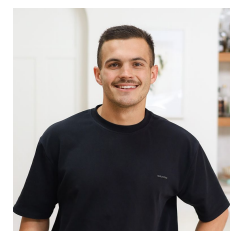
The heart of the home is the stylish kitchen, complete with stone benchtops, induction cooktop, dishwasher, and a

[For full version visit the website](https://www.magain.com.au/property/28-the-terrace-gawler-south-sa/8624037)

Type : House
Price : \$ 1,280,000
Building Size : 229 sqm
Land Size : 1488 sqm
View : <https://www.magain.com.au/property/28-the-terrace-gawler-south-sa/8624037>



Grant Fielke
08 8522 2715



Bailey Fielke
08 8522 2715

<https://www.magain.com.au>
Magain Real Estate

32 Adelaide Road Gawler South SA
08 8522 2715

28 The Terrace,
GAWLER SOUTH



↑ 4.5m



Living: 170.305Q.M
 Garage/Shade: 57.315Q.M
 Verandah: 73.975Q.M
 Entertaining: 71.585Q.M
 Shed/Rumpus: 58.015Q.M

TOTAL: 431.175Q.M

This drawing is for illustration purposes only. All measurements are internal and approximate. Details intended to be relied upon should be independently verified.

