

MAGAIN



42 Equestrian Drive Woodcroft SA

4 2 4

Please contact Lindy Kriticos from Magain Real Estate for all your property advice.

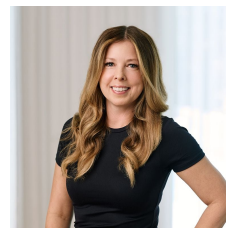
Set within the highly desirable enclave of Woodcroft, this impressive residence delivers a refined blend of space, functionality and lifestyle on a substantial 943sqm allotment. Designed to accommodate executive family living and effortless entertaining, the home offers exceptional versatility in a tightly held location.

A striking entry with polished slate flooring sets the tone, opening to a series of thoughtfully zoned living spaces. Multiple lounge and family areas provide flexibility for both formal and informal living, including a dedicated theatre/lounge room at the front of the home, complete with

Type : House
Building Size : 200 sqm
Land Size : 943 sqm
View : <https://www.magain.com.au/property/42-equestrian-drive-woodcroft-sa/8624497>



Lindy Kriticos
08 8381 6000



Zoe Ball
08 8381 6000

[For full version visit the website](https://www.magain.com.au)

<https://www.magain.com.au>
Magain Real Estate

Shop 15, Woodcroft Market Plaza, 217 Pimpala Road W
08 8381 6000

